



# CALIBRATION AND IDENTIFICATION PRODUCTS

Text on label	see page(s)	Text on label	see page(s)	Text on label	see page(s)
2001 Calibration	10	Do Not Use	17, 21-24, 26	<i>Sin Calibrar No Usar</i>	18
2002 Calibration	10	Do Not Use Until Tested & Calibrated	17, 23	Out of Service	18, 23
2003 Calibration	10	Do Not Use Until Tested & Calibrated/ <i>No Usar Hasta que haya sido probado y calibrado</i>	17, 24	Passed Inspection	20, 23
Accepted	20, 25, 26, 31	Dock to Stock	20, 24	Passed Inspection/ <i>Inspección Pasada</i>	20, 23
Accepted/Aceptado	20	Due For Inspection	26	Preventive Maintenance	23
Batch No.	22, 24, 26	Engineering Sample	22	QA Approved	31
Bin No.	24	First Piece Checked	25	Quality Made in the U.S.A.	30
(Blank)	13, 19, 26	For Indication Only	17	Quality Record	31
Cal.	9, 11-12	For Reference Only	9, 11, 17, 21, 22	Quality Record/Do Not Destroy	25
Calib. Not Required	11, 16	For Reference Only/Not for Data Collection	22	Re-Work	26
Calibrate Before Each use	16	For Reference Only/ <i>Para Referencia Solamente</i>	17, 22	Recalibrate If Seal Broken	14
Calibrate Before Each Use/ <i>Calibrese Antes de Cada Uso</i>	16	Functional Check Only	16	Received	31
Calibrate Before Use	16	Hold	22, 24-26	Reject	25
Calibrate Daily	16	Hold Do Not Use	26	Rejected	20, 26, 31
Calibrate Monthly	16	Hold for Inspection	25	Repair	26
Calibrate Weekly	16	Inactive	21, 24	Repair/Rework Required	25
Calibrated	7, 16	Inspected	26, 31	Repaired	18, 23
Calibration	6, 7, 8, 12, 25	Inspected OK	25	Requires Repair	18, 23
Calibration/ <i>Calibración</i>	16	Inventory	24	Return Goods	26
Calibration Extended	16	Limited Calibration	6, 17, 25	Return to Stock	26
Calibration Not Required	9, 16	Material Approved	20, 25	Return to Vendor	23, 24, 26
Calibration Not Required/ <i>No Requiere Calibración</i>	16	Next Calibration	10	Rework or Repair	26
Calibration Void If Seal Damaged	14	No Calibration Required	10	Sample	26
Calibration Void If Seal Broken	14, 15	Nonconforming	20	Scrap	24-26
Calibration Void If Seal Damaged/ <i>Calibración Nula Si El Sello Esta Dañado</i>	14	Not in Calibration System	18	Shelf Life	24
CE	30	Not in Calibration System/ <i>No Esta En Sistema De Calibración</i>	18	Special Instructions	26
Certified	20, 25	Obsolete	21, 24, 31	Standardize Before Each Use	18
Conforming	20	OK For Limited Use	18, 20, 23	Tested	20, 22, 23, 25, 26
Contract Review	31	OK For Shipment	26	Tool No.	22, 23
Control Document	21, 31	OK To Ship	20	Uncontrolled Document	21, 31
Controlled Copy	21	Out of Cal., Do Not Use	9, 11, 18	Verification	18, 20
Critical	22	Out of Calibration Do Not Use/		Verify Before Each Use	18
Defective Do Not Use	17, 22, 23, 24			Virus Checked	20
Do Not Remove from QC Area	17, 21			Void If Seal Damaged	14
				Warranty Void If Seal Broken	14

## New Products!

**CALIBRATION NOT REQUIRED  
DO NOT USE FOR  
PRODUCT ACCEPTANCE**

Page 16

**OBsolete**

BY \_\_\_\_\_ DATE \_\_\_\_\_

Page 24



Page 14



Page 20

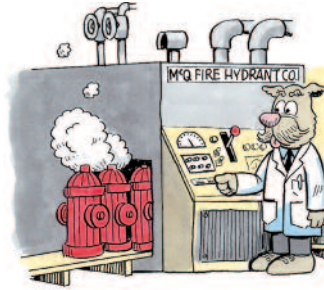
### Making Your Q-CEE's Labels Stick

All Q-CEE's labels feature pressure-sensitive adhesives. They must be applied to a clean, dry, non-textured surface. Press the whole surface of the label firmly to "set" the adhesive. It can take up to 72 hours for the adhesive to reach full gripping strength.

## Contents

### Calibration Labels, pages 6-18

- Coverall Labels—Protect Against Oils and Chemicals . . . 6
- Standard Calibration Labels . . . . . 7
- Durable Plastic Cloth • Durable Aluminum . . . . . 7
- Wrap-up Calibration Labels—Fit Around Odd Shapes . . 8
- Small Gage Recall Labels • Tamper Evident Labels . . . 10
- Small Calibration Labels—When Space is Limited . . . 11
- Laser Calibration Labels . . . . . 12
- Pens . . . . . 13
- Tamper Evident Security Seals . . . . . 14
- Calibration-Related Labels . . . . . 16
- Blank Labels & Protective Covers . . . . . 19
- Custom Labels Order Form . . . . . 28
- Inspection Arrows, Dots, USA Labels and CE Marks . . 29
- Pencil Cap Stamps and Record Cards . . . . . 31
- Label Printing System . . . . . 32
- Label Order Form (Fax toll-free) . . . . . 33
- Part Number Index . . . . . 34



### Maintenance and Repair Labels, page 23

<b>REQUIRES REPAIR</b>	
BY _____	DATE _____

### Inventory Control, page 24

INVENTORY	
NO	DATE
COUNT	BY



### Paper Labels & Tags, pages 25-26

<b>RETURN TO VENDOR</b>	
REMARKS _____	
SIGNED BY _____ DATE _____	

<b>INSPECTED OK</b>	
BY _____ DATE _____	



### Inspection Labels, page 20

<b>MATERIAL APPROVED</b>	
BY _____	DATE _____



### Document Control, page 21

<b>INACTIVE</b>	
BY _____	DATE _____



<b>CALIBRATION</b>	
I.D. No. _____	
BY _____ DATE _____	

<b>OUT OF CALIBRATION DO NOT USE</b>	
--------------------------------------	--

### Shop Floor Control, page 22

<b>HOLD</b>	
BY _____	DATE _____

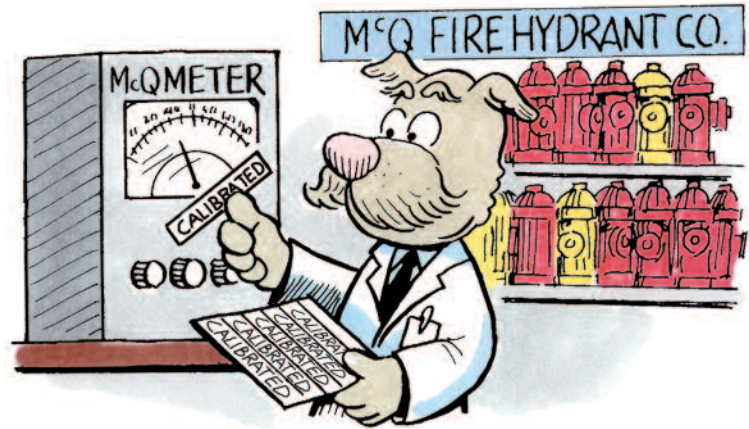


### Fax Order Form, page 33

### Part Number Index, pages 34-35

# Calibration Labels

Q-CEE's provides a wide range of calibration labels. Each style solves a different set of problems. Use the following guidelines to determine which label best suits your environment. If you need help selecting a label, call our Sales Associates toll free.



## Selecting the Right Calibration Label

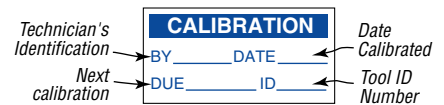
### How Big?

The amount of real estate available on a gage or instrument often dictates the size of the calibration label you can use. In general, choose the largest label that fits the space available. Larger labels provide more space to record information; are easier to write on and to read; and are harder to ignore! Most label styles come in at least two sizes.

If you are faced with the dilemma of trying to fit a large amount of information in tight quarters, consider our L05 laser-printable calibration labels shown on page 12; a laser printer can print very small but readable characters.

### What Information?

Most Q-CEE's calibration labels provide blanks to record all the standard information:



However, if your procedures only require you to note the next calibration recall date, consider the labels below. They reduce label preparation time by eliminating writing, and they are as easy to read and interpret as an alarm clock.



page 10

### "Sticker Stickiness"

Do you have an application where the label receives minimal handling or rubbing and minimal contact with oil, solvents, or chemicals? If so, a label with removable adhesive will stick indefinitely. These labels leave little or no adhesive residue when removed, so for labels that must be periodically removed and replaced, removable adhesive reduces clean-up labor.

Labels with permanent adhesive grip surfaces more aggressively. These labels work well when subjected to oil, solvents, or chemicals. While we call the adhesive "permanent," you can remove these labels. After removal, some adhesive may remain on the instrument surface.

In extreme circumstances, our labels with permanent adhesive may lose their grip. For these situations, we offer two more options. First, Q-CEE's Plastic Cloth and Aluminum labels feature our most aggressive adhesives. These labels may hold fast where others will not. The second option would be to use our clear protective cover, QC210AC. For more information on this option, see page 19.

Standard Size  
page 7

CALIBRATION	
I.D. No. _____	
By _____	Date _____
Due _____	

Miniature  
page 7

CALIBRATION	
BY _____	DATE _____
DUE _____	ID _____

(labels shown at full size)

Small circular  
page 11

CAL	
BY: _____	
DATE: _____	
DUE: _____	

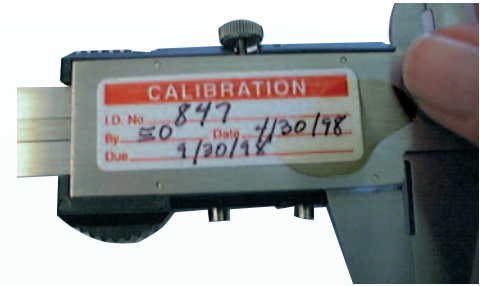
Really Big!  
Page 6

CALIBRATION	
ID# _____	
DATE DUE _____	
THIS ITEM LAST CALIBRATED	
DATE _____	BY _____

Laser printable!  
Page 12

CAL	
BY: JWD	
DAT: 4/4/96	
DUE: 7/1/96	

Fit lots of information onto a small space with your laser printer

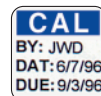


## Calibration Labels by Type of Adhesive

Labels With Removable Adhesive	Labels With Permanent Adhesive	Labels With Aggressive Adhesive
<i>see page</i>	<i>see page</i>	<i>see page</i>
QC105 16	L05 12	QPC01 7
QC155 16	L20 12	QPC02 7
MQC205 7	QCC306 6	QC450AM 7
MQC555 7	QCC311 6	
QCC500 11	QCC330 6	
QCC558 11	QUP3 8, 9	
QCC607- 8, 9	QUP6 8, 9	
QCC611 10	QUP12 8, 9	
	QCC351 11	
	QCC359 11	
	M1020 10	

## Create a Visual Control System With Color-Coded Labels

### Idea 1 Use colors to indicate the recall date for calibration



Based upon the calibration frequency, assign a different color for each time period (calendar quarter, month, day,

etc.). After completing the calibration steps, apply a calibration label with the color that matches the due date printed on the label. Make sure everyone on the production floor is aware of the current calibration recall color. Gages or instruments due for calibration will be easy to spot because their color highlights them.



### Idea 2 Use colors to indicate ownership of tools

Use different colors to indicate company-owned and employee-owned tools that must be calibrated.



### Idea 3 Use colors to indicate the assigned work area

Apply labels with colors that indicate where a gage or instrument is to be used (department, machine, etc.)

(The small labels above are shown on page 12.)

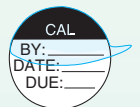
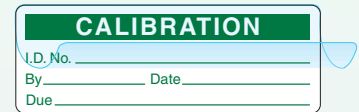
## Protecting Your Information from Oils, Solvents and Constant Handling

Does your written information stay legible until the next calibration session? Cutting oils, solvents, chemicals, abrasion, and constant handling can ruin your hand-written information.

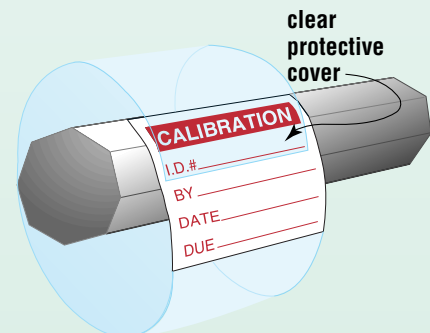
Placing a separate clear protective cover over your label is one solution; clear protective covers are shown on page 19.

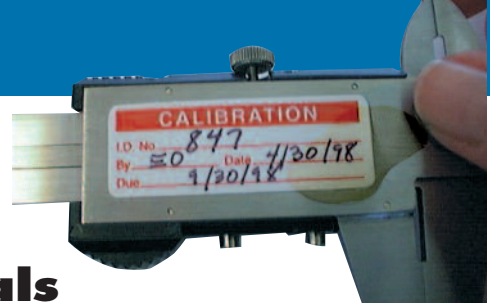
APPLY OVER LABEL

Better, consider Q-CEE's **Coverall** labels. Coverall labels feature a pre-attached clear protective cover—a convenience that eliminates time spent removing a separate cover from its backing and aligning it with the label. Three sizes may be found on page 6; refer to page 11 for small Coverall circles. These labels are suitable for flat or slightly rounded surfaces.



**Wrap-up** labels excel in situations where Coverall labels will not work. Use them on small cylindrical surfaces like gage or micrometer handles. In fact, the QUP12 Wrap-up label is very popular for use on micrometer thimbles. The clear tail on these labels wraps around until it covers its own information section. Look at the Wrap-up label selection on page 8.



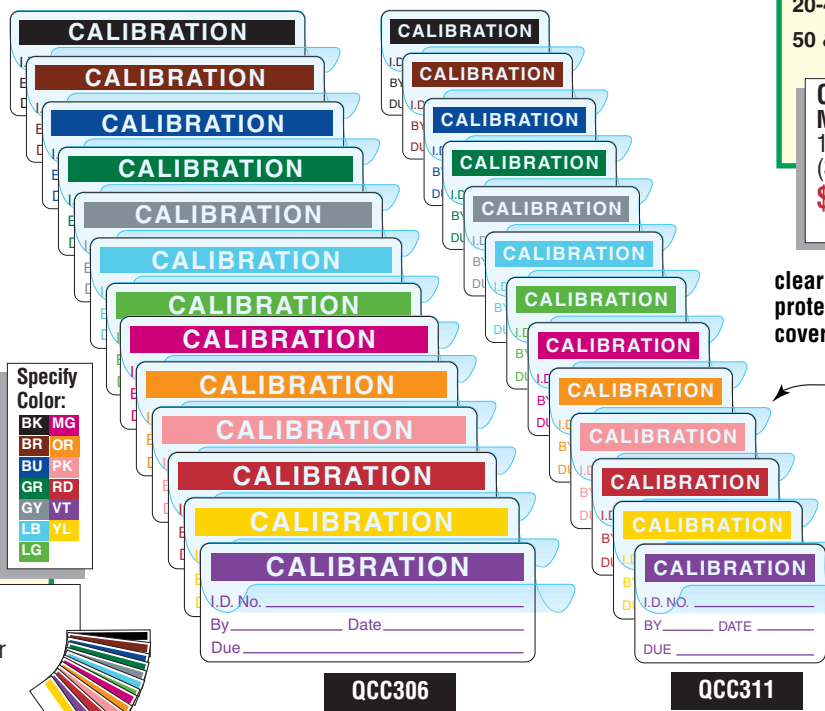


## Coverall Labels Protect Against Cutting Oils and Chemicals

These labels are designed for use on gages and instruments that are subjected to constant handling, cutting oils, or chemicals. They consist of a clear polyester cover prepositioned at the top of a vinyl calibration label with permanent adhesive. The cover protects your written information against cutting oils and chemicals, and the permanent adhesive keeps the label in place. Our customers tell us

### Coverall Calibration Labels— 2 sizes, multiple colors!

- Improved design!**
- clear cover hinged at top; easier to write on
  - rounded corners
  - supplied in handy, bound books
  - same price—4 more labels!



these labels really work well on the shop floor.

Use the labels below on flat or slightly curved surfaces. For cylindrical surfaces, like handles, use the Wrap-up labels on page 8, shown here:



**QCC311 PRICE**  
• 144 labels per book

1-19 . . . . .	<b>\$21.75</b>
20-49 . . . . .	<b>\$16.31</b>
50 & up . . . . .	<b>\$14.14</b>

**Specify Color:**

BK	MG
BR	OR
BU	PK
GR	RD
GY	VT
LB	YL
LG	

**QCC311ZC Multicolor Pack**  
1 sheet of each color (312 labels)  
**\$32.75**

**QCC306 PRICE**  
• 144 labels per book

1-19 . . . . .	<b>\$22.95</b>
20-49 . . . . .	<b>\$17.21</b>
50 & up . . . . .	<b>\$14.92</b>

**Specify Color:**

BK	MG
BR	OR
BU	PK
GR	RD
GY	VT
LB	YL
LG	

**QCC306ZC Multicolor Pack**  
1 sheet of each color (208 labels)  
**\$34.50**

clear protective cover

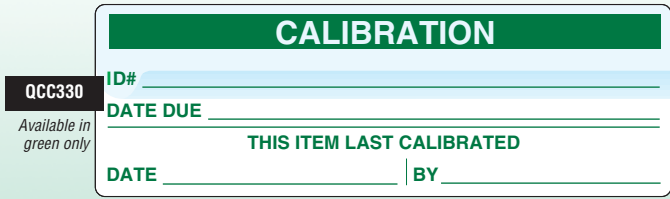
- At a Glance ...**
- ✓ Available in multiple colors for color control of calibration interval
  - ✓ Self-laminating clear cover protects your data from tampering, weathering, smearing, chemicals, and abrasion
  - ✓ Two sizes to fit space available
  - ✓ Easy to write or stamp on
  - ✓ Shown at actual size (front label)
- Specifications—see pages 34-35**

### Large Coverall

**QCC330 PRICE**  
• 104 labels per pkg.

1-19 . . . . .	<b>\$29.95</b>
20-49 . . . . .	<b>\$22.46</b>
50 & up . . . . .	<b>\$19.47</b>

*Available in green only*



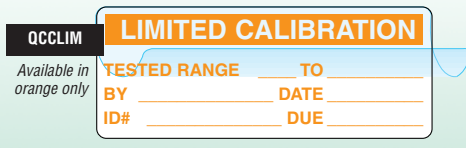
- At a Glance ...**
- ✓ Improved visibility
  - ✓ Self-laminating clear cover protects your data from tampering, weathering, smearing, chemicals, and abrasion
  - ✓ Easy to write or stamp on
  - ✓ Shown at actual size
- Specifications—see pages 34-35**

### Limited Calibration

**QCCLIM PRICE**  
• 140 labels per pkg.

1-19 . . . . .	<b>\$22.95</b>
20-49 . . . . .	<b>\$17.21</b>
50 & up . . . . .	<b>\$14.92</b>

*Available in orange only*



- At a Glance ...**
- ✓ Limited calibration
  - ✓ Self-laminating clear cover protects your data from tampering, weathering, smearing, chemicals, and abrasion
  - ✓ Shown at actual size
- Specifications—see pages 34-35**

## Standard Calibration Labels

### 2 Sizes, multiple colors

**MQC205 PRICE**  
• 130 labels per book

1-19 ..... **\$9.95**  
20-49 ..... **\$7.46**  
50 & up ... **\$6.47**

**MQC205ZC Multicolor Pack**  
1 sheet of each color (156 labels)  
**\$14.95**

**Specify Color:**

BK	MG
BR	OR
BU	PK
GR	RD
GY	VT
LB	YL
LG	

**MQC555 PRICE**  
• 160 labels per pkg.

1-19 ..... **\$10.25**  
20-49 ..... **\$7.69**  
50 & up ... **\$6.66**

**MQC555ZC Multicolor Pack**  
1 sheet of each color (390 labels)  
**\$14.50**

**Specify Color:**

BK	MG
BR	OR
BU	PK
GR	RD
GY	VT
LB	YL
LG	

**At a Glance ...**

- ✓ Available in multiple colors for color control of calibration interval
- ✓ Pressure sensitive, adhesive-backed
- ✓ Easy to write or stamp on
- ✓ Easy removal from backing
- ✓ Easy to pick up and reposition
- ✓ Shown at actual size

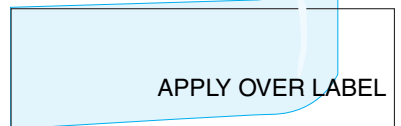
Specifications—see pages 34-35

## Clear Protective Covers Sold Separately

If you need to protect your written information from smearing, oils, and chemicals, the **Coverall** labels on the previous page are your best bet.

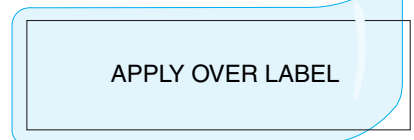
But if you don't *always* need a clear cover or if you need an exceptionally oil-resistant cover that overlaps the edges of your label, we sell these covers separately. See page 19 for prices.

### QC200AC



Made of 0.002" (0.05mm) clear polyethylene; more abrasion-resistant than QC210AC below.

### QC210AC



More protection from cutting oils, coolants, and chemicals than QC200AC. Larger size allows edges to overlap label, protecting the label's adhesive. Made of 0.004" (0.1mm) clear vinyl.

## Durable Plastic Cloth

**QPC01 & QP02 PRICE**  
• 130 labels per pkg.

1-19 ..... **\$22.95**  
20-49 ..... **\$17.21**  
50 & up ... **\$14.92**

**CALIBRATION**

By \_\_\_\_\_ Date \_\_\_\_\_

Due \_\_\_\_\_ ID \_\_\_\_\_

**QPC01**

**CALIBRATED**

By \_\_\_\_\_ Date \_\_\_\_\_

Due \_\_\_\_\_

**QP02**

**At a Glance ...**

- ✓ Resistant to tearing, water, humidity, chemicals, high temperature
- ✓ Need to protect your data? See protective covers at right
- ✓ Fade-resistant to UV light
- ✓ Aggressive adhesive
- ✓ Shown at actual size

Specifications—see pages 34-35

## Durable Aluminum Labels

**QC450AM BU**

**CALIBRATION**

I.D. No. \_\_\_\_\_

By \_\_\_\_\_ Date \_\_\_\_\_

Due \_\_\_\_\_

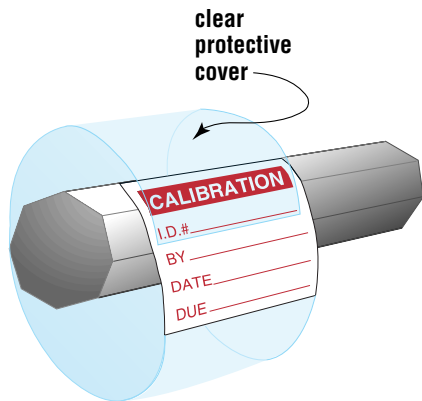
**QC450AM Price**  
• 130 labels per book

1-19 ..... **\$22.95**  
20-49 ..... **\$17.21**  
50 & up .. **\$14.92**

**At a Glance ...**

- ✓ Withstand heavy use
- ✓ Withstand exposure to the elements
- ✓ Ballpoint pens, pencils and typewriters leave permanent impression
- ✓ Resistant to high temperature, water, grease, oil, solvents, and moisture
- ✓ One label color per book
- ✓ Shown at actual size

Specifications—see pages 34-35



## Wrap-up Labels

- Designed for use on handles and odd shapes
- These labels really resist cutting oils, coolants and chemicals!
- 3 styles, multiple colors

Like Coverall labels, Wrap-up labels provide a convenient way to protect the information on your calibration labels. Wrap-up labels excel in situations where Coverall labels won't work. Use them on small cylindrical surfaces like gage or micrometer handles. They work very well on any narrow part of an instrument; they just need to wrap completely around the part until the clear tail covers the writing on the label.

The Wrap-up construction includes a calibration label with a clear tail that wraps around the part and covers the label section. These labels employ clear, flexible vinyl with permanent adhesive.

In addition to the obvious benefit of protecting the written information on the label, Wrap-up labels wrap adhesive all the way around the part. In this way, they adhere tightly to the gage or instrument even when subjected to constant handling.

### At a Glance ...

- ✓ For thimbles of micrometers and handles on other tools
- ✓ Clear section wraps around and protects your data from tampering, smearing, weather, chemicals, and abrasion
- ✓ Color control of calibration interval
- ✓ Shown at actual size

Specifications—see pages 34-35

QUP3 PRICE	
• 30 labels per pkg.	
1-19 . . . . .	<b>\$14.50</b>
20-49 . . . . .	<b>\$10.88</b>
50 & up . . . . .	<b>\$9.43</b>

Specify Color:	
BK	LG
BR	MG
BU	OR
GR	RD
GY	VT
LB	YL

**QUP3**

QUP6 PRICE	
• 60 labels per pkg.	
1-19 . . . . .	<b>\$14.50</b>
20-49 . . . . .	<b>\$10.88</b>
50 & up . . . . .	<b>\$9.43</b>

Specify Color:	
BK	MG
BU	OR
GR	RD
LB	VT
LG	YL

**QUP6**

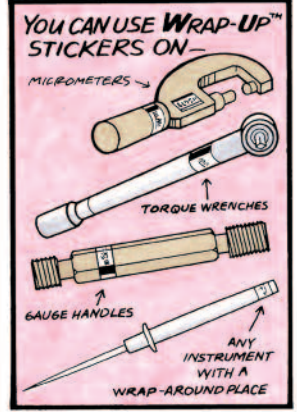
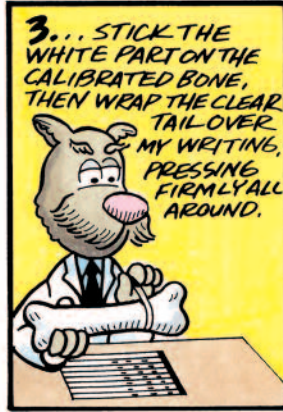


# Sticker LABEL TALK with M<sup>Q</sup>Q



THE CLEAR TAIL COVERS AND PROTECTS YOUR WRITING—EVEN WHEN REPEATEDLY GRIPPED BY OILY HANDS.

ID# \_\_\_\_\_ BY \_\_\_\_\_ DATE \_\_\_\_\_ DUE \_\_\_\_\_



CAL	I.D.# _____ BY _____ DATE _____ DUE _____	<p><b>QUP12 PRICE</b> • 120 labels per pkg.</p> <p>1-19 ..... <b>\$14.50</b> 20-49 ..... <b>\$10.88</b> 50 &amp; up ... <b>\$9.43</b></p> <p><b>QUP12ZC Multicolor Pack</b> 1 sheet of each color (156 labels) <b>\$21.75</b></p>	<p>clear protective cover</p>
CAL	I.D.# _____ BY _____ DATE _____ DUE _____		
CAL	I.D.# _____ BY _____ DATE _____ DUE _____		
CAL	I.D.# _____ BY _____ DATE _____ DUE _____		
CAL	I.D.# _____ BY _____ DATE _____ DUE _____		
CAL	I.D.# _____ BY _____ DATE _____ DUE _____		
CAL	I.D.# _____ BY _____ DATE _____ DUE _____		
CAL	I.D.# _____ BY _____ DATE _____ DUE _____		

Wrap-up Label Dimensions	LENGTH, LABEL ONLY		LENGTH, WRAP AROUND ONLY		HEIGHT		OVERALL LENGTH	
	QUP12	2"	50.8mm	4"	101.6mm	1/4"	6.4mm	6"
QUP3	1"	25.4mm	5"	127.0mm	1"	25.4mm	6"	152.4mm
QUP6	1"	25.4mm	2"	50.8mm	1"	25.4mm	3"	76.2mm

## Calibration-Related Wrap-up Labels

For dimensions, see QUP12 above

**QUP12-136 PRICE**  
• 120 labels per pkg.

1-19 ..... **\$14.50**  
20-49 ..... **\$10.88**  
50 & up ... **\$9.43**

FOR REFERENCE ONLY

QUP12-136

clear protective cover

## Small Gage Recall Labels

**Q-CEE's** half-inch circular Calibration Recall labels are easy and efficient to use, and they require very little of your instrument's surface area. When you only need to know the next calibration due date, these labels are perfect. They eliminate writing unneeded information, and they are easy to

read and interpret.

Simply use a small paper punch or a permanent pen to mark out the calibration recall month number. They are as easy to read as a clock.

The bright colors indicate the calibration recall year.

### Easy to read as a clock ...

PRICE	
• 200 labels per book	
1-19 . . . . .	<b>\$12.25</b>
20-49 . . . . .	<b>\$9.19</b>
50 & up . . .	<b>\$7.96</b>



**QCC608**



**QCC609**



**QCC610**



**QCC611**



**QCC612**



**QCC613**



**QCC614**

### At a Glance ...

- ✓ Simple and efficient
- ✓ Easy to read and interpret
- ✓ Use where space is limited
- ✓ Minimal adhesive residue
- ✓ Fade-resistant to UV light
- ✓ Shown at actual size

**Specifications—see pages 34-35**

## Tamper Evident Labels

**Q-CEE's** Tamper Evident Calibration labels:

By applying over an access screw, they provide for internal settings to remain secure.

Once these labels have been properly applied, attempts to remove them will be clearly visible—it is almost impossible to remove the label in one

piece. They can only be peeled off in little ugly chunks. For a photo of how this material works, please see page 14.

The tamper-evident “No Calibration Required” label identifies instruments that are not maintained in a calibration system.

### Attempts to remove it are clearly visible!

PRICE	
• 100 labels per package	
1-19 . . . . .	<b>\$22.95</b>
20-49 . . . . .	<b>\$17.21</b>
50 & up . . .	<b>\$14.92</b>

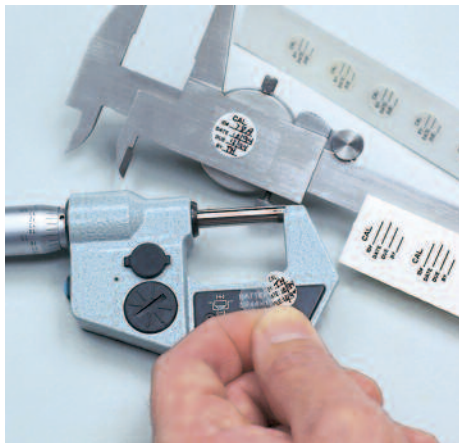


**M1020**

### At a Glance ...

- ✓ Attempts to remove labels are clearly visible
- ✓ Highly visible
- ✓ Pressure sensitive, adhesive-backed
- ✓ Shown at actual size

**Specifications—see pages 34-35**



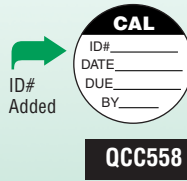
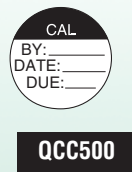
## Small Calibration Labels

When space is limited on an instrument, **Q-CEE's** small calibration labels are the only choice. Use them only when necessary because they are difficult and time-consuming to write legibly on, the amount of information which can be recorded is limited, and the small writing is difficult to read. The best small-label solution for efficiency and legibility is **Q-CEE's** L05, Laser Calibration labels, found on page 12.

These small labels are available in two sizes, and each size has a standard and a Coverall format. The small Coverall label version is available in five colors.

### Small Circular Labels

PRICE	
• 200 labels per package	
1-19 . . . . .	<b>\$12.25</b>
20-49 . . . . .	<b>\$9.19</b>
50 & up . . .	<b>\$7.96</b>

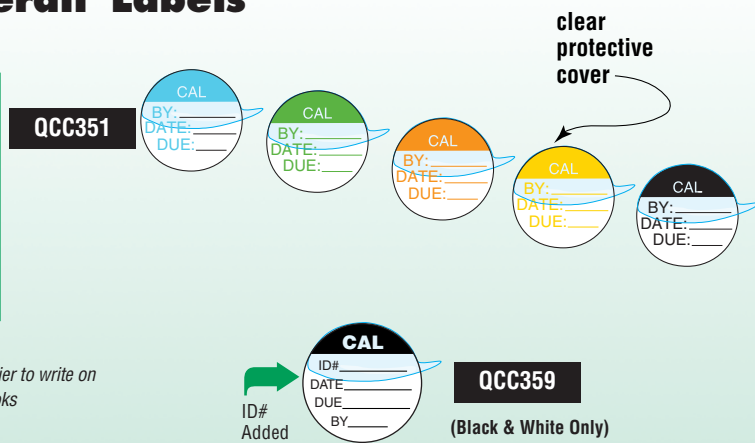


#### At a Glance ...

- ✓ Use when space is limited
  - ✓ Need to protect your written information from oils or chemicals? use Coverall models below.
  - ✓ Shown at actual size
- Specifications—see pages 34-35**

### Small Coverall Labels

QCC351 & QCC359 PRICE	
• 200 labels per book	
1-19 . . . . .	<b>\$20.75</b>
20-49 . . . . .	<b>\$15.56</b>
50 & up . . .	<b>\$13.49</b>



#### At a Glance ...

- ✓ Use when space is limited
  - ✓ Color control of calibration interval
  - ✓ Convenient self-laminating clear cover
  - ✓ Protects your data from tampering, weather, smearing, chemicals and abrasion
  - ✓ Shown at actual size
- Specifications—see pages 34-35**



#### Improved design!

- clear cover hinged at top; easier to write on
- supplied in handy, bound books
- same price—4 more labels!

### Calibration Control Labels

PRICE	
• 200 labels per package	
1-19 . . . . .	<b>\$12.25</b>
20-49 . . . . .	<b>\$9.19</b>
50 & up . . .	<b>\$7.96</b>



#### At a Glance ...

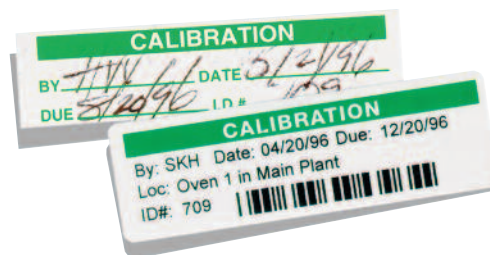
- ✓ Use when space is limited
  - ✓ Shown at actual size
- Specifications—see pages 34-35**

## Laser Calibration Labels



Supplied on convenient half-sized sheets

When **SPEED** and **ACCURACY** count...  
Which would you rather read?



### Format and Print Calibration Labels on your Laser Printer

Now Q-CEE's provides a simple and economical way to automate your calibration label preparation.

You don't need to buy a high-priced, specialized printer. Use your existing Windows-based PC and laser printer to make fast, neat and clear calibration labels with our Laser Calibration Labels.

By using this combination of software and laser-ready labels, you maintain the advantage of using Q-CEE's color-coded labels. Plus, you gain the capability to customize your calibration labels without paying a premium price for custom labels.

PrintEasy software is shown on page 32.

### Laser Calibration Labels—multiple colors, 2 sizes

#### At a Glance ...

- ✓ Print with your laser printer
- ✓ Color control of calibration interval
- ✓ Supplied in economical half-sheets
- ✓ Two sizes to fit space available
- ✓ Pressure sensitive, adhesive-backed
- ✓ Fade-resistant to UV light
- ✓ Sheet size 9-1/2" x 4-1/8"
- ✓ Available in multiple colors for color control of calibration interval
- ✓ Easy to pick up and reposition
- ✓ Shown at actual size (front label)

Specifications—see pages 34-35

1 Sheet = 10 labels of ea. color  
4 colors  
130 labels total

#### L20 PRICE

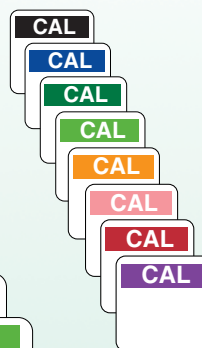
• 200 labels per pkg.  
(10 labels/sheet)

1-19 ..... \$14.95  
20-49 ..... \$11.21  
50 & up ... \$9.72

#### Specify Color:



L20



L05

#### L05 PRICE

• 660 labels per pkg.  
(33 labels/sheet)

1-19 ..... \$14.95  
20-49 ..... \$11.21  
50 & up ... \$9.72

#### Specify Color:



1 Sheet = 33 labels of ea. color  
8 colors  
429 total labels to a pkg.

## Blank Laser Labels

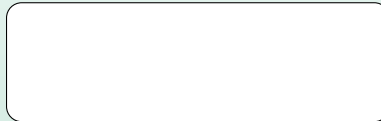
### At a Glance ...

- ✓ Print with your laser printer
- ✓ Supplied in economical half-sheets (9-1/2" x 4-1/8")
- ✓ Two sizes to fit space available
- ✓ Shown at actual size

Specifications—see pages 34-35



L05X



L20X

### L05X PRICE

- 660 labels per pkg. (33 labels/sheet)

1-19 ..... **\$13.95**  
 20-49 ..... **\$10.46**  
 50 & up ... **\$9.07**

### L20X PRICE

- 200 labels per pkg. (10 labels/sheet)

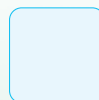
1-19 ..... **\$13.95**  
 20-49 ..... **\$10.46**  
 50 & up ... **\$9.07**

## Clear Protective Cover for Laser Labels

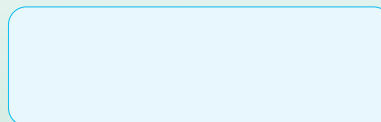
### At a Glance ...

- ✓ Protect your printed labels from:
  - weathering
  - chemicals
  - abrasion
- ✓ Pressure sensitive, adhesive-backed
- ✓ Same size and shape as laser labels
- ✓ Shown at actual size

Specifications—see pages 34-35



L05AC



L20AC

### L05AC PRICE

- 660 labels per pkg. (33 labels/sheet)

1-19 ..... **\$12.75**  
 20-49 ..... **\$9.56**  
 50 & up ... **\$8.29**

### L20AC PRICE

- 200 labels per pkg. (10 labels/sheet)

1-19 ..... **\$12.75**  
 20-49 ..... **\$9.56**  
 50 & up ... **\$8.29**

## Pens



### QCP600

#### Fine Point Sharpie

- Black ink

each ..... **\$2.25**

### QCP650

#### Ultra Fine Point Sharpie

- Black ink

each ..... **\$2.25**

### Q Tidy

- Cleans and removes labels, tapes, glues, etc.

each ..... **\$8.25**

## Tamper Evident Security Seals

Does the security of your instrument settings concern you? Do you want to limit access to the inside of equipment?

Security seals indicate when someone has attempted to remove them to gain access to an instrument's interior. Most importantly, they deter users from attempting to open your equipment.

Now, **Q-CEE's** provides several security seal solutions. Each approach offers a different level of security and deterrence.

You can choose the degree of security which matches your requirements (see illustration above).

Regardless of your security level preference, you must properly position each of the labels in this section for best results. Apply any of the seals on these pages across an access panel gap or over a panel locking screw. In this way, the seal will act as a psychological barrier to entry into the interior of your instruments.



Secure



More Secure



Most Secure



Tamper evident seal in place attempts to remove it are clearly visible

### Standard Security Seals



Companies have successfully used our standard security seals for years to discourage tampering with instruments. When properly applied, potential intruders can only peel off little pieces of the label. Attempts to remove these labels thereby become immediately apparent.

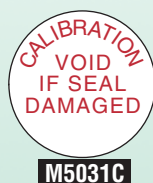
#### At a Glance ...

- ✓ Attempts to remove these labels are clearly visible
- ✓ Thin, fragile vinyl
- ✓ Pressure sensitive, adhesive-backed
- ✓ Shown at actual size

Specifications—see pages 34-35



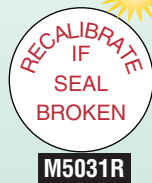
M5031



M5031C



M5031W



M5031R

**CALIBRATION VOID  
IF SEAL BROKEN**

M5031A

CALIBRATION VOID  
IF SEAL BROKEN  
CALIBRACIÓN NULA SI EL SELLO  
ESTA DAÑADO

M5031AS

#### M5031A/AS PRICE

• 160 labels per pkg.

1-19 ..... \$22.95

20-49 .... \$17.21

50 & up .. \$14.92

#### M5031C/W/R PRICE

• 200 labels per pkg.

1-19 ..... \$22.95

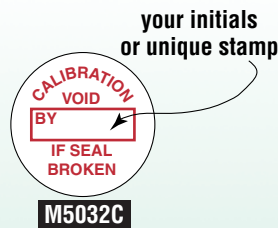
20-49 .... \$17.21

50 & up .. \$14.92

### ID Block Security Seals



Are you concerned about someone completely removing the security seal which you applied and then replacing it with an identical one? **Q-CEE's** ID Block raises the level of deterrence a notch. It has all of the tamper evident properties of our Standard Security Seals above plus one added feature—a box in the center of the label for your initials or your unique stamp. Even if an individual can obtain a supply of these labels, he or she should find it difficult to duplicate your personal identification mark on the label.



M5032C

#### At a Glance ...

- ✓ Space for ID mark to deter replacement
- ✓ Attempts to remove labels are clearly visible
- ✓ Pressure sensitive, adhesive-backed
- ✓ Thin, fragile vinyl
- ✓ Shown at actual size

Specifications—see pages 34-35

#### M5032C PRICE

• 200 labels per pkg.

1-19 ..... \$22.95

20-49 .... \$17.21

50 & up .. \$14.92

## Tamper Indicating Security Seals



**Q-CEE's** new Tamper Indicating Security Seals do not fall apart like our other security seals. These seals are made of tough, clear polyester. Use them when you need a security seal which will not break.

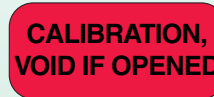
“Calibration Void if Opened” is printed in black letters on the clear polyester material. Red adhesive behind the clear polyester forms a smooth, red background for these words.

However, if the label is removed from the instrument, part of the adhesive sticks to the instrument and part peels off with the label. As a result, the adhesive spells the words “Void Opened” (top right). Attempts to stick the label back in place will not restore the red adhesive to its original appearance (bottom right)—you can tell at a glance that someone tried to remove the label.

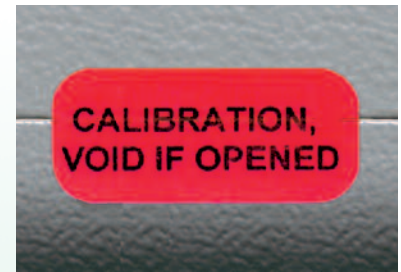
### At a Glance ...

- ✓ Looks like a normal label on equipment
- ✓ When removed, adhesive residue says, “Void Opened”
- ✓ Attempts to remove these label are clearly visible
- ✓ Tough, tear-resistant polyester
- ✓ Shown at actual size

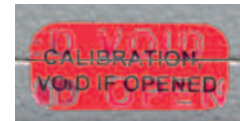
**Specifications—see pages 34-35**



M5051C PRICE	
• 250 labels per roll	
1-19 . . . . .	<b>\$45.95</b>
20-49 . . . . .	<b>\$34.36</b>
50 & up . . . . .	<b>\$32.17</b>



*Adhesive spells "VOID OPENED" if the clear polyester label is pulled off.*



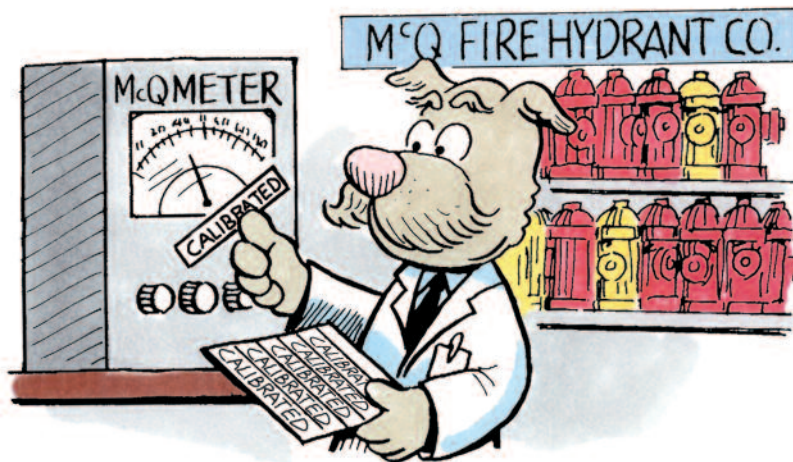
*Replacing the clear label makes a mess.*

## Calibration-Related Labels

### At a Glance ...

- ✓ Easy to write or stamp on
- ✓ Pressure sensitive, adhesive-backed
- ✓ Easy removal from backing
- ✓ Easy to pick up and reposition
- ✓ Minimal adhesive residue
- ✓ Fade-resistant to UV light
- ✓ Supplied in handy pocket-sized books
- ✓ Shown at actual size

Specifications—see pages 34-35



- Identifies an instrument used to determine a product's functional capabilities
- Not used for precise measurements of the product
- Reduce calibration workload and expense
- Helps to avoid audit write-ups

QC153

**FUNCTIONAL CHECK ONLY**

- Identify inactive gages and instruments; allows calibrating seldom-used gages on an as-needed basis.
- Identify critical instruments, such as pH meters and digital coating thickness gages, which must be calibrated before each measurement.

QC133

**CALIBRATE BEFORE EACH USE**

- for large instruments; the most visible label

QC146

**CALIBRATE BEFORE USE**

- for large instruments

MAM133

**CALIBRATE BEFORE EACH USE**

- for small instruments

QC170

**CALIBRATION EXTENDED**

BY \_\_\_\_\_ DATE \_\_\_\_\_  
DUE \_\_\_\_\_ ID# \_\_\_\_\_

Use on an exception basis for emergencies

when the instrument must be used past its calibration due date

QC155

**CALIBRATED**

BY \_\_\_\_\_ DATE \_\_\_\_\_  
DUE \_\_\_\_\_

Record calibration status on the instrument

QC105

**CALIBRATION**

BY \_\_\_\_\_ DATE \_\_\_\_\_  
DUE \_\_\_\_\_ I.D.# \_\_\_\_\_

- Identify instruments not used for critical measurements
- Reduce calibration workload and expense
- Warn production employees not to use these instruments
- Helps to avoid audit write-ups

QC126

**CALIBRATION NOT REQUIRED**

- for large instruments; the most visible label


QC126S

**CALIBRATION NOT REQUIRED  
NO REQUIERE CALIBRACIÓN**

- English/Spanish version

QC172

**CALIBRATION NOT REQUIRED  
DO NOT USE FOR  
PRODUCT ACCEPTANCE**

- provides more specific instructions 

MAM126

**CALIBRATION NOT REQUIRED**

- for small instruments

QCC226

**CALIB. NOT REQUIRED**

- for very small instruments



QC134 **CERTIFIED**  
BY \_\_\_\_\_ DATE \_\_\_\_\_

Some use it in place of a calibration label; it refers to the accompanying calibration certificate

QC118 **DO NOT USE**  
BY \_\_\_\_\_ DATE \_\_\_\_\_

Identify gages and instruments which must be held out of service

- instructions

QC131 **DEFECTIVE DO NOT USE**

- status + instructions

QC128 **DO NOT USE**  
**Until Tested & Calibrated**

Mark new or repaired gages and instruments awaiting certification and calibration

- for large instruments; the most visible label

MAM128 **DO NOT USE**  
**Until Tested & Calibrated**

- for small instruments

- Identify gages and instruments used for reference, but not for critical measurements
- Reduce calibration workload and expense
- Warns production employees not to use these instruments
- Helps to avoid audit write-ups

QC136 **FOR REFERENCE ONLY**

- for large instruments; the most visible label

QC136S **FOR REFERENCE ONLY**  
**PARA REFERENCIA SOLAMENTE**

- English/Spanish version

MAM136 **FOR REFERENCE ONLY**

- for small instruments

QCC236 **FOR REFERENCE ONLY**

- for very small instruments

QC157 **FOR REFERENCE ONLY**  
**NOT FOR DATA COLLECTION**

- more specific instructions

QC162 **FOR INDICATION ONLY**  
ID \_\_\_\_\_  
BY \_\_\_\_\_ DATE \_\_\_\_\_

- alternate wording

QC132 **DO NOT REMOVE FROM QC AREA**

Useful on instruments and documents

## Limited Calibration Labels

Use in place of a calibration label when:

- only part of the full measurement range is calibrated
- only a few of the functions on an instrument are calibrated and used

QC135 **LIMITED CALIBRATION**  
BY \_\_\_\_\_ DATE \_\_\_\_\_

QCCLIM *see page 6 for price*

Coverall label version protects recorded data

**LIMITED CALIBRATION**  
TESTED RANGE \_\_\_\_\_ TO \_\_\_\_\_  
BY \_\_\_\_\_ DATE \_\_\_\_\_  
ID# \_\_\_\_\_ DUE \_\_\_\_\_

## Prices

(QC101-QC172) **QC101-QC172 PRICE**  
• 160 labels per book

1-19	.....	<b>\$10.25</b>
20-49	.....	<b>\$7.69</b>
50 & up	...	<b>\$6.66</b>

(MAM101-MAM142) **MAM101-MAM142 PRICE**  
• 160 labels per pkg.

1-19	.....	<b>\$10.25</b>
20-49	.....	<b>\$7.69</b>
50 & up	...	<b>\$6.66</b>

(QCC226, QCC236) **QCC226, QCC236 PRICE**  
• 200 labels per pkg.

1-19	.....	<b>\$12.25</b>
20-49	.....	<b>\$9.19</b>
50 & up	...	<b>\$7.96</b>

## Calibration-related labels, continued

- Identify instruments not used for critical measurements
- Reduce calibration workload and expense
- Warn production employees not to use these instruments.
- Helps to avoid audit write-ups

**QC142** **NOT IN CALIBRATION SYSTEM** • for large instruments; the most visible label

**MAM142** **NOT IN CALIBRATION SYSTEM** • for small instruments

- Identify gages and instruments that have overdue calibration
- Warn all employees not to use these instruments

**QC127** **OUT OF CALIBRATION DO NOT USE** • for large instruments; the most visible label

**QC127S** **OUT OF CALIBRATION DO NOT USE**  
**SIN CALIBRAR NO USAR** • English/Spanish version

**MAM127** **OUT OF CALIBRATION DO NOT USE** • for small instruments

**QCC227** **OUT OF CALIB. DO NOT USE** • for very small instruments

## Prices

**(QC101-QC172)**

**QC101-QC172 PRICE**  
• 160 labels per book

1-19	....	<b>\$10.25</b>
20-49	....	<b>\$7.69</b>
50 & up	...	<b>\$6.66</b>

**(MAM101-MAM142)**

**MAM101-MAM142 PRICE**  
• 160 labels per pkg.

1-19	....	<b>\$10.25</b>
20-49	....	<b>\$7.69</b>
50 & up	...	<b>\$6.66</b>

**(QCC227)**

**QCC227 PRICE**  
• 200 labels per pkg.

1-19	....	<b>\$12.25</b>
20-49	....	<b>\$9.19</b>
50 & up	...	<b>\$7.96</b>

**QC145** **OUT OF SERVICE**

- Temporarily mark gages and instruments which should not be used
- Permanently mark retired gages

**QC122** **REQUIRES REPAIR**

BY \_\_\_\_\_ DATE \_\_\_\_\_

Mark defective gages and instruments awaiting repair; so that the equipment is not used

**QC138** **STANDARDIZE BEFORE EACH USE**

Clearly instructs user to follow standardization procedure before making a measurement. For instance, pH probes must be inserted in a standard solution before each measurement is made.

**QC143** **VERIFICATION**

BY \_\_\_\_\_ DATE \_\_\_\_\_  
DUE \_\_\_\_\_ I.D.# \_\_\_\_\_

For instruments, fixtures, tools, etc., which must be checked rather than calibrated

**QC137** **VERIFY BEFORE EACH USE**

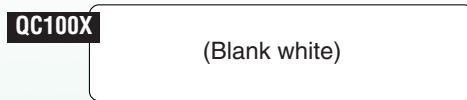
- Identify inactive instruments, fixtures, tools, etc.; allows verifying seldom-used ones on an as-needed basis.
- Identify critical instruments, fixtures, tools, etc., that must be verified every time they are used.

# Blank Labels

For blank, laser-printable labels, see page 12

QC100X PRICE	
• 160 labels per book	
1-19 . . . . .	<b>\$10.25</b>
20-49 . . . . .	<b>\$7.69</b>
50 & up . . . .	<b>\$6.66</b>

## Vinyl Label



### At a Glance ...

- ✓ Blank—whole surface available for recorded information
- ✓ Pressure sensitive, adhesive-backed
- ✓ Different materials and configurations for a variety of purposes:

**Vinyl**—general uses

**Aluminum**—writing makes permanent impression

**Vinyl Coverall**—protects recorded information

- ✓ Easy to write or stamp on
- ✓ Shown at actual size

Specifications—see pages 34-35

QIDX PRICE	
• 100 labels per book	
<b>\$36.25</b>	

## Aluminum Label



QCC351X PRICE	
• 200 labels per package	
1-19 . . . . .	<b>\$20.75</b>
20-49 . . . . .	<b>\$15.56</b>
50 & up . . . .	<b>\$13.49</b>

## Vinyl Coverall Labels



QCC306X PRICE	
• 144 labels per book	
1-19 . . . . .	<b>\$19.50</b>
20-49 . . . . .	<b>\$14.63</b>
50 & up . . . .	<b>\$12.68</b>

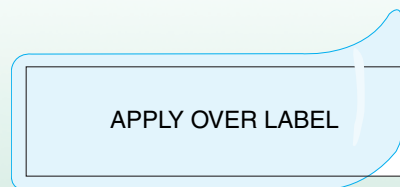
# Clear Protective Covers

For use on labels without integral covers

**Vinyl Cover:** *best protection against cutting oils and coolants*

### At a Glance ...

- ✓ More protection from cutting oils than QC200AC (below)
  - ✓ For labels without attached covers
  - ✓ This cover is larger than most of our labels—it overlaps the label to protect the label's adhesive
  - ✓ Shown at actual size (2-1/4" x 7/8")
- Specifications—see pages 34-35



QC210AC

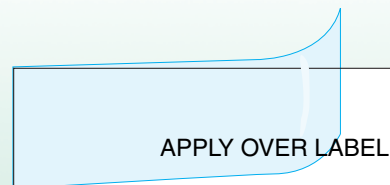
Actual Size	
L	2-1/4" 57.2mm
H	7/8" 22.2mm

QC210AC PRICE	
• 500 labels per box	
1-19 . . . . .	<b>\$21.95</b>
20-49 . . . . .	<b>\$16.46</b>
50 & up . . . .	<b>\$14.27</b>

**Polyethylene Cover:** *general purpose cover*

### At a Glance ...

- ✓ More abrasion-resistant than QC210AC
  - ✓ Protects your data from tampering, weathering, smearing, chemicals, abrasion
  - ✓ For labels without attached covers
  - ✓ Shown at actual size (2" x 5/8")
- Specifications—see pages 34-35



QC200AC

Actual Size	
L	2" 50.8mm
H	5/8" 15.9mm

QC200AC PRICE	
• 200 labels per box	
1-19 . . . . .	<b>\$12.75</b>
20-49 . . . . .	<b>\$9.56</b>
50 & up . . . .	<b>\$8.29</b>

**QC169** **MATERIAL APPROVED**  
BY \_\_\_\_\_ DATE \_\_\_\_\_  
For raw material acceptance

**QC115** **PASSED INSPECTION**  
BY \_\_\_\_\_ DATE \_\_\_\_\_  
• the most visible label

**MAM115** **PASSED INSPECTION**  
BY \_\_\_\_\_ DATE \_\_\_\_\_  
• for small instruments

**QC101** **ACCEPTED**  
BY \_\_\_\_\_ DATE \_\_\_\_\_  
• the most visible label

**MAM101** **ACCEPTED**  
BY \_\_\_\_\_ DATE \_\_\_\_\_  
• for small instruments

**QC148** **TESTED**  
DATE \_\_\_\_\_  
BY \_\_\_\_\_  
Indicates that testing has been completed; the results or disposition may be pending

**QC134** **CERTIFIED**  
BY \_\_\_\_\_ DATE \_\_\_\_\_  
The label can refer to a certificate of compliance which accompanies the product or is on file

**QC143** **VERIFICATION**  
BY \_\_\_\_\_ DATE \_\_\_\_\_  
DUE \_\_\_\_\_ I.D.# \_\_\_\_\_  
Use on test fixtures

**QC164** **OK TO SHIP**  
BY \_\_\_\_\_ DATE \_\_\_\_\_  
**QCC564** **OK TO SHIP**  
DATE \_\_\_\_\_  
BY \_\_\_\_\_  
Mark product or packaging approved to go out the door.



## Prices

**(QC101-QC172)**  
**QC101-QC172 PRICE**  
• 160 labels per book  
1-19 .... **\$10.25**  
20-49 ..... **\$7.69**  
50 & up ... **\$6.66**

**(MAM101-MAM142)**  
**MAM101-MAM142 PRICE**  
• 160 labels per pkg.  
1-19 ..... **\$10.25**  
20-49 ..... **\$7.69**  
50 & up ... **\$6.66**

**(QCC564)**  
**QCC564 PRICE**  
• 200 labels per pkg.  
1-19 ..... **\$12.25**  
20-49 ..... **\$9.19**  
50 & up ... **\$7.96**

**QC130** **REJECTED**  
BY \_\_\_\_\_ DATE \_\_\_\_\_  
• the most visible label

**MAM130** **REJECTED**  
BY \_\_\_\_\_ DATE \_\_\_\_\_  
• for small instruments



## Document Control Labels

### At a Glance ...

- ✓ Easy to write or stamp on
- ✓ Pressure sensitive, adhesive-backed
- ✓ Easy removal from backing
- ✓ Minimal adhesive residue
- ✓ Fade resistant to UV light
- ✓ Shown at actual size

Specifications—see pages 34-35

### Prices

(QC101-QC172)

<b>QC101-QC172</b>	
<b>PRICE</b>	
• 160 labels per book	
1-19 . . . .	<b>\$10.25</b>
20-49 . . . .	<b>\$7.69</b>
50 & up . . .	<b>\$6.66</b>

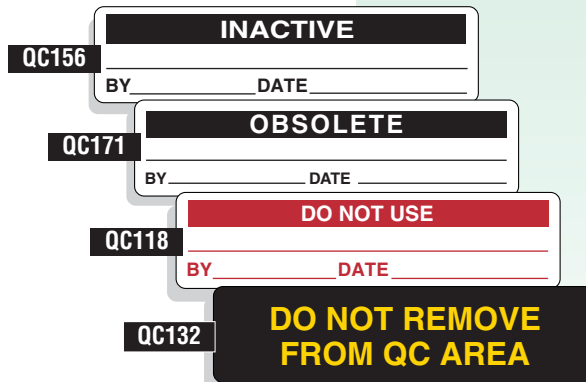
(MAM101-MAM142)

<b>MAM101-MAM142</b>	
<b>PRICE</b>	
• 160 labels per pkg.	
1-19 . . . .	<b>\$10.25</b>
20-49 . . . .	<b>\$7.69</b>
50 & up . . .	<b>\$6.66</b>

(QCC236)

<b>QCC236 PRICE</b>	
• 200 labels per pkg.	
1-19 . . . .	<b>\$12.25</b>
20-49 . . . .	<b>\$9.19</b>
50 & up . . .	<b>\$7.96</b>

• Place on document covers



• Place on document covers of reference material.

## Shop Floor Control Labels

### At a Glance ...

- ✓ Easy to write or stamp on
- ✓ Pressure sensitive, adhesive-backed
- ✓ Easy removal from backing
- ✓ Minimal adhesive residue
- ✓ Fade resistant to UV light
- ✓ Shown at actual size

Specifications—see pages 34-35

For pricing,  
see page 21



**QC158** **HOLD**  
BY \_\_\_\_\_ DATE \_\_\_\_\_

Use to temporarily stop progress of an item. Single out an item from the standard production flow.

Identify products kept separate as visual standards (these are not used to check critical dimensions)

**QC136** **FOR REFERENCE ONLY**

- for large instruments; the most visible label

**QC136S** **FOR REFERENCE ONLY**  
**PARA REFERENCIA SOLAMENTE**

- English/Spanish version

**QC148** **TESTED**  
DATE \_\_\_\_\_  
BY \_\_\_\_\_

Indicates that testing has been completed. The results or disposition may be pending.

**QC157** **FOR REFERENCE ONLY**  
**NOT FOR DATA COLLECTION**

- more specific instructions

**MAM136** **FOR REFERENCE ONLY**

- for small instruments

**QCC236** **FOR REFERENCE ONLY**

- for very small instruments

Identify items which must be isolated from processes

**QC118** **DO NOT USE**  
BY \_\_\_\_\_ DATE \_\_\_\_\_

- instructions

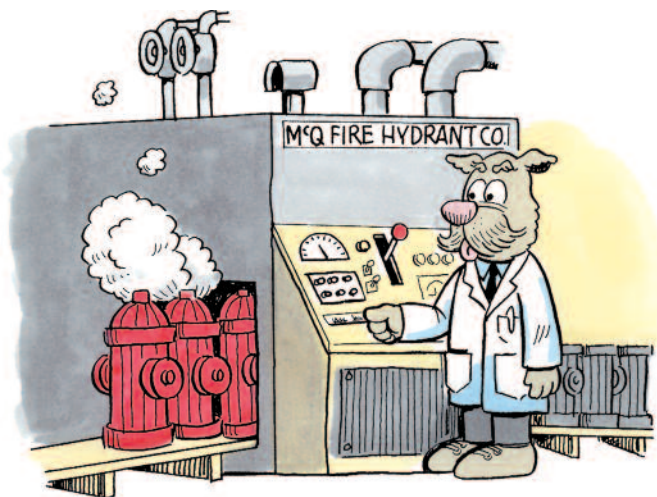
**QC131** **DEFECTIVE DO NOT USE**

- status + instructions

**QC149** **TOOL NO.**  
DEPT. \_\_\_\_\_

Use to record the tool ID number.

Use to indicate the department assignment for tools.



# Maintenance & Repair Labels

## At a Glance ...

- ✓ Easy to write or stamp on
- ✓ Pressure sensitive, adhesive-backed
- ✓ Easy removal from backing
- ✓ Minimal adhesive residue
- ✓ Fade resistant to UV light
- ✓ Shown at actual size

For pricing, see page 24

Specifications—see pages 34-35

**PREVENTIVE MAINTENANCE**

PM210 BU

**PREVENTIVE MAINTENANCE**

PM210 GR

**PREVENTIVE MAINTENANCE**

PM210 OR

**PREVENTIVE MAINTENANCE**

DONE BY \_\_\_\_\_ DATE \_\_\_\_\_

PM210 RD

NEXT MAINT. DATE \_\_\_\_\_

Use to indicate status on equipment requiring periodic inspections.

Clearly indicates when last inspection was done and when the next one is due.

**TESTED**

QC148

DATE \_\_\_\_\_

BY \_\_\_\_\_

Indicates that testing has been completed. The results or disposition may be pending.

Use to indicate status on equipment requiring periodic inspections. Clearly indicates when last inspection was done and when the next one is due.

**PASSED INSPECTION**

QC115

BY \_\_\_\_\_ DATE \_\_\_\_\_

• for large instruments; the most visible label

**PASSED INSPECTION**

MAM115

BY \_\_\_\_\_ DATE \_\_\_\_\_

• for small instruments

**TOOL NO.**

QC149

DEPT. \_\_\_\_\_

Use to record the tool ID number

Use to indicate the department assignment for tools

**REQUIRES REPAIR**

QC122

BY \_\_\_\_\_ DATE \_\_\_\_\_

Marks defective equipment awaiting repair. Ensure that the equipment is not used.

**OUT OF SERVICE**

QC145

Temporarily mark equipment which should not be used. Permanently mark retired equipment.

**DO NOT USE**

QC128

Until Tested & Calibrated

Mark new or repaired gages and instruments awaiting certification and calibration

• for large instruments; the most visible label

**DO NOT USE**

QC118

BY \_\_\_\_\_ DATE \_\_\_\_\_

Identify equipment which must be held out of service

**DO NOT USE**

MAM128

Until Tested & Calibrated

• for small instruments

**DEFECTIVE DO NOT USE**

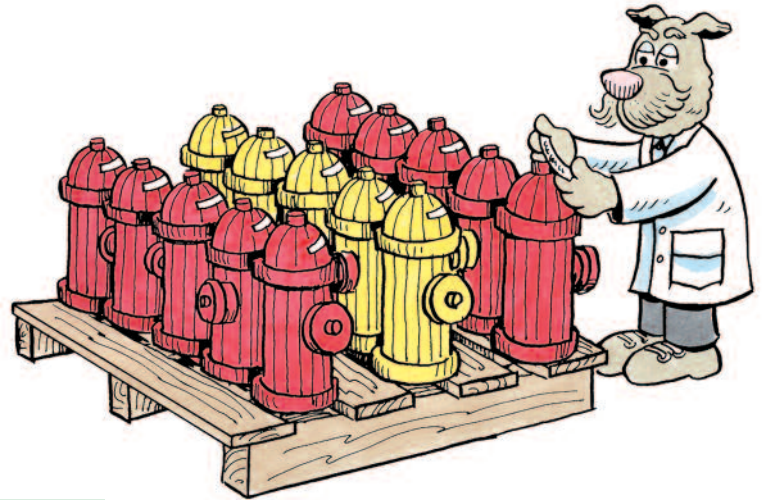
QC131

## Inventory Control Labels

### At a Glance ...

- ✓ Easy to write or stamp on
- ✓ Pressure sensitive, adhesive-backed
- ✓ Easy removal from backing
- ✓ Minimal adhesive residue
- ✓ Fade resistant to UV light
- ✓ Shown at actual size

Specifications—see pages 34-35



**QC144**

INVENTORY	
NO	DATE
COUNT	BY

Use to indicate carton, box, or pallet counts. Use to indicate SKU or serial number.

Identify items which must be isolated from processes

**QC118**

DO NOT USE	
BY	DATE

- Instructions

**QC131**

DEFECTIVE DO NOT USE	
-------------------------	--

- status + instructions

Clearly identify items to be scrapped.

Ensure that these items are isolated from active stock.

**QC120**

SCRAP	
BY	DATE

**QC129**

SHELF LIFE	
OF	AT
EXPIRES	

Use so that items are not issued after their useful life

**QC158**

HOLD	
BY	DATE

Use to temporarily stop movement of an item. Single out an item from the standard product flow.

**QC156**

INACTIVE	
BY	DATE

Clearly identify inactive items.

Clearly identify obsolete items. Keep obsolete items isolated from active stock.

**QC171**

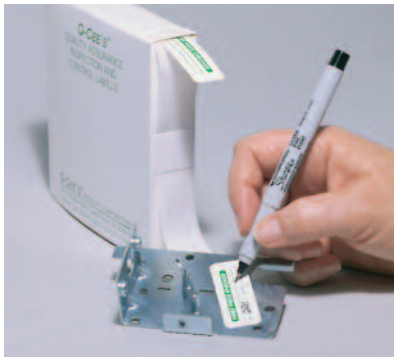
OBSOLETE	
BY	DATE

**New!**

### Prices

(PM210)	<b>PM210 PRICE</b> • 130 labels per book 1-19 . . . . \$10.25 20-49 . . . . \$7.69 50 & up . . . \$6.66
(QC101-QC172)	<b>QC101-QC172 PRICE</b> • 160 labels per book 1-19 . . . . \$10.25 20-49 . . . . \$7.69 50 & up . . . \$6.66
(MAM101-MAM142)	<b>MAM101-MAM142 PRICE</b> • 160 labels per pkg. 1-19 . . . . \$10.25 20-49 . . . . \$7.69 50 & up . . . \$6.66





## Economical Paper Inspection & Control Labels

### At a Glance ...

- ✓ Our most economical labels
- ✓ Easy to write or stamp on
- ✓ Pressure sensitive, adhesive-backed
- ✓ For indoor use only
- ✓ Supplied in handy dispenser boxes
- ✓ Shown at actual size

Specifications—see pages 34-35

#### PRICE

• 1000 labels per box

1-19 ..... **\$31.75**

20-49 ..... **\$23.81**

50 & up .. **\$22.23**

**ACCEPTED**

BY \_\_\_\_\_ DATE \_\_\_\_\_

**QLL401**

**INSPECTED OK**

BY \_\_\_\_\_ DATE \_\_\_\_\_

**QLL402**

**MATERIAL APPROVED**

BY \_\_\_\_\_ DATE \_\_\_\_\_

**QLL403**

**TESTED**

BY \_\_\_\_\_ DATE \_\_\_\_\_

**QLL405**

**CALIBRATION**

BY \_\_\_\_\_ DATE \_\_\_\_\_

DUE \_\_\_\_\_ # \_\_\_\_\_

**QLL406**

**HOLD FOR INSPECTION**

BY \_\_\_\_\_ DATE \_\_\_\_\_

**QLL407**

**REPAIR/REWORK REQUIRED**

BY \_\_\_\_\_ DATE \_\_\_\_\_

**QLL409**

**REJECT**

BY \_\_\_\_\_ DATE \_\_\_\_\_

**QLL412**

**FIRST PIECE CHECKED**

BY \_\_\_\_\_ DATE \_\_\_\_\_

**QLL420**

## Clear Protective Cover for Paper Labels

#### QLL-COVER PRICE

• 1000 labels per box

1-19 ..... **\$44.95**

20-49 ..... **\$33.71**

50 & up .. **\$29.22**

**QLL-COVER**



Cover shown actual size

### At a Glance ...

- ✓ For use with Economical Paper labels (above)

Specifications—see pages 34-35



## Large Paper Labels

ACCEPTED

Material \_\_\_\_\_ Part No. \_\_\_\_\_  
 PO # \_\_\_\_\_ Job No. \_\_\_\_\_  
 Vendor \_\_\_\_\_ Quantity \_\_\_\_\_  
 Remarks / Disposition \_\_\_\_\_  
 Recd. By \_\_\_\_\_ Date \_\_\_\_\_  
 Insp. By \_\_\_\_\_ Date \_\_\_\_\_

QAL601

INSPECTED

Material \_\_\_\_\_ Part No. \_\_\_\_\_  
 PO # \_\_\_\_\_ Job No. \_\_\_\_\_ Total pcs. \_\_\_\_\_  
 No. of Pcs. Inspected \_\_\_\_\_ = \_\_\_\_\_ % of total  
 No. of Pcs. Rejected \_\_\_\_\_ = \_\_\_\_\_ % of total  
 Remarks / Disposition \_\_\_\_\_  
 Insp. By \_\_\_\_\_ Date \_\_\_\_\_

QAL602

REJECTED

Material \_\_\_\_\_ Part No. \_\_\_\_\_  
 PO # \_\_\_\_\_ Job No. \_\_\_\_\_  
 Vendor / Supplier \_\_\_\_\_  
 Pcs. Received \_\_\_\_\_ Pcs. Rejected \_\_\_\_\_  
 Remarks / Disposition \_\_\_\_\_  
 Insp. By \_\_\_\_\_ Date \_\_\_\_\_

QAL612

HOLD  
DO NOT USE

Material \_\_\_\_\_ Part No. \_\_\_\_\_  
 PO # \_\_\_\_\_ Job No. \_\_\_\_\_  
 Total Pcs. \_\_\_\_\_ Pcs. Held \_\_\_\_\_  
 Remarks / Disposition \_\_\_\_\_  
 Insp. By \_\_\_\_\_ Date \_\_\_\_\_

QAL608

Actual Size

L 4" 101.6mm  
 H 3" 76.2mm

### At a Glance ...

- ✓ Room to record more information
  - ✓ Not recommended for outdoor use
  - ✓ Note: labels shown at *reduced* size
- Specifications—see pages 34-35**

### PRICE

• 500 labels per roll

1-19 ..... **\$37.95**

20-49 ..... **\$28.46**

50 & up .. **\$24.67**

## Paperboard Tags

### At a Glance ...

- ✓ Tie to products
  - ✓ Large and visible
  - ✓ More space to record remarks
  - ✓ For indoor use only
  - ✓ Note: labels shown at *reduced* size
- Specifications—see pages 34-35**

ACCEPTED

REMARKS \_\_\_\_\_  
 \_\_\_\_\_  
 \_\_\_\_\_  
 SIGNED BY \_\_\_\_\_ DATE \_\_\_\_\_

QMT101

DO NOT USE

REMARKS \_\_\_\_\_  
 \_\_\_\_\_  
 \_\_\_\_\_  
 SIGNED BY \_\_\_\_\_ DATE \_\_\_\_\_

QMT123

REPAIR

REMARKS \_\_\_\_\_  
 \_\_\_\_\_  
 \_\_\_\_\_  
 SIGNED BY \_\_\_\_\_ DATE \_\_\_\_\_

QMT213

SCRAP

REMARKS \_\_\_\_\_  
 \_\_\_\_\_  
 \_\_\_\_\_  
 SIGNED BY \_\_\_\_\_ DATE \_\_\_\_\_

QMT222

INSPECTED

REMARKS \_\_\_\_\_  
 \_\_\_\_\_  
 \_\_\_\_\_  
 SIGNED BY \_\_\_\_\_ DATE \_\_\_\_\_

QMT106

HOLD

REMARKS \_\_\_\_\_  
 \_\_\_\_\_  
 \_\_\_\_\_  
 SIGNED BY \_\_\_\_\_ DATE \_\_\_\_\_

QMT211

SPECIAL INSTRUCTIONS

REMARKS \_\_\_\_\_  
 \_\_\_\_\_  
 \_\_\_\_\_  
 SIGNED BY \_\_\_\_\_ DATE \_\_\_\_\_

QMT214

REJECTED

REMARKS \_\_\_\_\_  
 \_\_\_\_\_  
 \_\_\_\_\_  
 SIGNED BY \_\_\_\_\_ DATE \_\_\_\_\_

QMT121

RE-WORK

REMARKS \_\_\_\_\_  
 \_\_\_\_\_  
 \_\_\_\_\_  
 SIGNED BY \_\_\_\_\_ DATE \_\_\_\_\_

QMT212

RETURN GOODS

REMARKS \_\_\_\_\_  
 \_\_\_\_\_  
 \_\_\_\_\_  
 SIGNED BY \_\_\_\_\_ DATE \_\_\_\_\_

QMT216

### PRICE

• per pkg. of 100 tags and twist ties

1-19 ..... **\$17.75**

20-49 ..... **\$13.31**

50 & up .. **\$12.43**

### Actual Size

L 5-3/4" 146.1mm  
 H 2-7/8" 73.0mm

### Can't Find the Label You Need?



Did you ever think, "I like this standard label, but ..." Or, "If only they made ..." Our in-house art department has broad capabilities; see our samples below. We can produce custom labels based on our standard constructions.

The advantage of custom labels is clear—you get labels designed to meet your requirements without compromise. We should point out a couple of the disadvantages to using custom designed labels:

- 1) Custom labels cost more than equivalent standard labels.
- 2) We stock standard labels, so we can respond quickly to your urgent needs.

Custom labels always take more time for us to produce.

In spite of these disadvantages, custom labels often make sense.

The following are just a few examples of custom labels that we have produced. We can't show all the possibilities, but we hope these samples will give you some good ideas.

*Modify one of our standard labels to meet your exact requirements*

**LIMITED CALIBRATION**  
 TESTED RANGE \_\_\_\_\_ TO \_\_\_\_\_  
 DATE \_\_\_\_\_ BY \_\_\_\_\_  
 DUE DATE \_\_\_\_\_

**PASSED INSPECTION**  
 BY \_\_\_\_\_ DATE \_\_\_\_\_  
 DUE \_\_\_\_\_ ID# \_\_\_\_\_  
 GAGE \_\_\_\_\_ PRINT \_\_\_\_\_  
 REV \_\_\_\_\_ REV \_\_\_\_\_

**CALIBRATION NOT REQUIRED**  
 DO NOT USE FOR  
 PRODUCT ACCEPTANCE

**CALIBRATION**  
 CIN \_\_\_\_\_  
 By \_\_\_\_\_ Date \_\_\_\_\_  
 Due \_\_\_\_\_

*Add your company name or logo to one of our standard labels*

This is especially important for companies who provide services for others. It would be advisable to put your telephone number on the label, too.

**CERTIFICATION**  
 BY \_\_\_\_\_ DATE \_\_\_\_\_  
 DUE \_\_\_\_\_  
 Acme Manuf. Co. **CALIBRATION VOID IF SEAL DAMAGED**

**OUT OF SERVICE**  
 ID NO. \_\_\_\_\_  
 BY \_\_\_\_\_  
 DATE \_\_\_\_\_

**CALIBRATION**  
 I.D. No. \_\_\_\_\_  
 Acme Co. Quality Manufacturing  
 By \_\_\_\_\_ Date \_\_\_\_\_  
 Due \_\_\_\_\_

**ACME Calibration**  
 By \_\_\_\_\_ Date \_\_\_\_\_  
 Due \_\_\_\_\_ S/N \_\_\_\_\_

*Design a completely new label*

**DAILY CALIBRATION**  
 ID: \_\_\_\_\_  
 DATE BY  
 MON \_\_\_\_\_  
 TUES \_\_\_\_\_  
 WEDS \_\_\_\_\_  
 THUR \_\_\_\_\_  
 FRI \_\_\_\_\_  
 SAT \_\_\_\_\_  
 SUN \_\_\_\_\_

**REPARADO**  
 POR \_\_\_\_\_  
 FECHA \_\_\_\_\_  
**HEPA FILTER INTEGRITY TEST**  
 BY \_\_\_\_\_ DATE \_\_\_\_\_  
 DUE \_\_\_\_\_ ID# \_\_\_\_\_  
 FORM# 1126 (REV 1/97)

**CONTROLLED COPY**  
 NO. \_\_\_\_\_

**FURNACE VERIFICATION**  
 BY \_\_\_\_\_ DATE \_\_\_\_\_  
 DUE \_\_\_\_\_ ID # \_\_\_\_\_

**FUNCTIONAL CHECK ONLY**  
 BY \_\_\_\_\_ DATE \_\_\_\_\_  
 DUE \_\_\_\_\_

**VERIFICATION NOT REQUIRED**

**Containment Process Completed**  
 By \_\_\_\_\_

**AUDIT**  
 By \_\_\_\_\_ Date \_\_\_\_\_  
 Due \_\_\_\_\_ ID# \_\_\_\_\_

**CALIBRATION CRITICAL** DATE \_\_\_\_\_  
 BY \_\_\_\_\_  
 DUE \_\_\_\_\_ ID# \_\_\_\_\_

**REMOVE & DISCARD BEFORE USE**

**PROPERTY OF ACME Q.A.**

**QUALITY DOCUMENTS**



## 9 Easy Steps to Custom Labels

- |  |  |
|--|--|
| <p><b>1</b> Fill out the form below.</p> <p><b>2</b> Be sure to make a rough sketch of your label design in the space at the bottom of the form. Remember to show the label's outside dimensions.</p> <p><b>3</b> Fax this page to us toll free at 800-285-7016</p> <p><b>4</b> We will send a quotation back to you within three business days.</p> | <p><b>5</b> If the quote is satisfactory, fax a purchase order to us for your labels.</p> <p><b>6</b> Our Art Department will create a drawing and send it for you to approve.</p> <p><b>7</b> You either approve the design or mark your changes on it, then send it back.</p> <p><b>8</b> After receiving your approval we will begin manufacturing your labels.</p> <p><b>9</b> You will receive your custom labels in the time noted in the quotation.</p> |
|--|--|

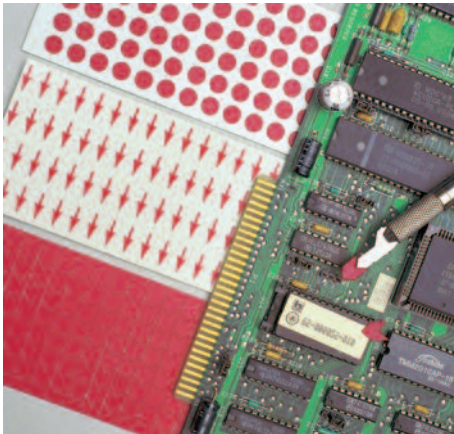
Call toll free 1-800-950-4922 Fax 1-800-285-7016

### Request for Custom Quotation

Company Name		Your Name	
Address		Phone No.	
City, ST	ZIP	Fax No.	
<b>1. Product</b>	<input type="checkbox"/> Standard Label	<input type="checkbox"/> Coverall ( <i>with protective cover</i> )	<input type="checkbox"/> Wrap-up label <input type="checkbox"/> Paperboard Tag
<b>2. Material</b>	<input type="checkbox"/> Vinyl ( <i>standard</i> )	<input type="checkbox"/> Polyester	<input type="checkbox"/> Destructible <input type="checkbox"/> Paper <input type="checkbox"/> Aluminum
<b>3. Adhesive</b>	<input type="checkbox"/> Permanent	<input type="checkbox"/> Removable	<input type="checkbox"/> Indoor Application <input type="checkbox"/> Outdoor Application
<b>4. Material Color</b>	<input type="checkbox"/> White	<input type="checkbox"/> Matte Gold	<input type="checkbox"/> Matte Silver <input type="checkbox"/> Other (specify)
	<input type="checkbox"/> Yellow	<input type="checkbox"/> Brushed Gold	<input type="checkbox"/> Brushed Silver
<b>5. Copy Color (Print Color)</b>	<input type="checkbox"/> Black	<input type="checkbox"/> Blue	<input type="checkbox"/> Green <input type="checkbox"/> Orange <input type="checkbox"/> Red <input type="checkbox"/> White <input type="checkbox"/> Other (specify)
	<input type="checkbox"/> Reverse (copy will be the color of the background)		<input type="checkbox"/> Magenta
<b>6. Label size</b>	Width ( <i>left to right</i> )		Height ( <i>top to bottom</i> )
<b>7. Corners</b>	<input type="checkbox"/> Square <input type="checkbox"/> Rounded		
<b>8. Serial Numbers?</b>	<input type="checkbox"/> Yes <input type="checkbox"/> No	Starting No.	Ending No.
<b>9. Barcode?</b>	<input type="checkbox"/> Yes <input type="checkbox"/> No	<b>Barcode Type</b>	<input type="checkbox"/> Code 128 <input type="checkbox"/> Code 1 2 of 5 <input type="checkbox"/> No Preference <input type="checkbox"/> Code 39 <input type="checkbox"/> Code UCP <input type="checkbox"/> Unknown will send sample
<b>10. Will you write on this label?</b>	<input type="checkbox"/> Yes <input type="checkbox"/> No		
<b>11. If this label may come in contact with chemicals or solvents may we suggest?</b>	<input type="checkbox"/> Clear Flap <input type="checkbox"/> Lamination		
<b>12. Approximate quantity of labels needed:</b>	Have you ordered this item from us before? <input type="checkbox"/> Yes <input type="checkbox"/> No		
<b>13. Please sketch your label below:</b>			

CS9004 - F1 Rev B

## Inspection Arrows & Dots



Use arrows and dots to point out problems discovered during inspection. They can indicate such diverse defects as hairline cracks in printed circuit boards or surface defects on a painted finish.

The arrows are available only in red, but the dots come in multiple colors. Use the colors to indicate the status of defects. In addition, the colored dots may be combined with other labels in this catalog to provide additional visual information about the status of an item.

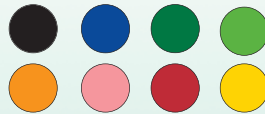
The large paper dots, QLLD500 and QLLD750, have a write-on surface. Written information can supplement the status indicated by the color code.

Use dots on raw materials, parts, finished products, stock bins, records, etc.

### Durable Colored Dots—to Indicate Point of Problem

QAD502 PRICE	
• 105 sheets/book, 156 dots/sheet	
1-19 . . . . .	<b>\$10.25</b>
20-49 . . . . .	<b>\$7.69</b>
50 & up . . .	<b>\$6.66</b>

Specify Color:	
BK	OR
BU	PK
GR	RD
LG	YL



**QAD502**

**QAD502ZC**  
**Multicolor Pack**  
 1 sheet of each color  
 (156 dots/sheet, 1248 dots)  
**\$14.50**



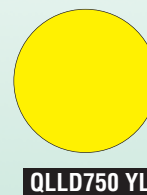
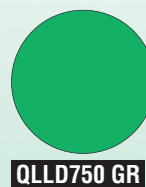
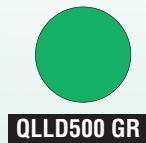
#### At a Glance ...

- ✓ Color code to indicate status of defects, inventory, records, etc.
- ✓ Pressure sensitive, adhesive-backed
- ✓ Easy removal from backing
- ✓ Minimal adhesive residue
- ✓ Fade-resistant to UV light
- ✓ Shown at actual size

**Specifications—see pages 34-35**

### Colored Paper Dots—With Write-on Surface

PRICE	
• 1000 dots per pkg.	
1-19 . . . . .	<b>\$19.75</b>
20-49 . . . . .	<b>\$14.81</b>
50 & up . . .	<b>\$13.83</b>



#### At a Glance ...

- ✓ Color code to indicate status of defects, inventory, records, etc.
- ✓ Easy to mark with pencil, ballpoint pen or ink stamp
- ✓ Supplied in handy dispenser box; one color per box
- ✓ Shown at actual size

**Specifications—see pages 34-35**

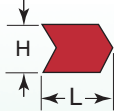
## Durable Arrows Indicate Point of Problem

### At a Glance ...

- ✓ Easily identify surface defects
- ✓ Pressure sensitive, adhesive-backed
- ✓ Easy to pick up and reposition
- ✓ Minimal adhesive residue
- ✓ Fade-resistant to UV light
- ✓ Shown at actual size
- ✓ Easy removal from backing

Specifications—see pages 34-35

**QAA375**

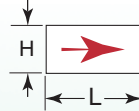


Actual Size	
L	3/8" 9.5mm
H	1/4" 6.4mm

**QAA375 PRICE**  
• 2880 arrows per book

1-19	.....	<b>\$16.95</b>
20-49	.....	<b>\$12.71</b>
50 & up	..	<b>\$11.02</b>

**QAA501**



Actual Size	
L	1/2" 12.7mm
H	1/4" 6.4mm

**QAA501 PRICE**  
• 1280 arrows per book

1-19	.....	<b>\$10.25</b>
20-49	.....	<b>\$7.69</b>
50 & up	...	<b>\$6.66</b>

## Durable Vinyl CE Mark Labels

Are you shipping your product to Europe? Electrical and electronic products must show compliance with the EMC Directive by displaying a CE mark.

**Q-CEE's** offers CE marks that meet design layout requirements. These labels are available in two sizes.

### At a Glance ...

- ✓ Signifies compliance to EMC Directive
- ✓ Attractive high quality label
- ✓ Pressure sensitive, adhesive-backed
- ✓ Fade-resistant to UV light
- ✓ Shown at actual size

Specifications—see pages 34-35



**QCE10**

648 Labels per Package



**QCE30**

504 Labels per Package

**QCE10 & QCE30 PRICE**  
• 504 labels per pkg.

1-19	.....	<b>\$13.50</b>
20-49	....	<b>\$10.13</b>
50 & up	...	<b>\$9.45</b>

## **Gage and Instrument Record Card**

Calibration records are an important part of the gage and instrument control system. These index cards are an economical way to track calibration and recall data. Actual size is 5" x 7-1/2".

<b>QGC100 PRICE</b>	
• 100 cards per pkg.	
1-19 . . . . .	<b>\$14.50</b>
20-49 . . . . .	<b>\$10.88</b>
50-100 . . . . .	<b>\$9.43</b>

**QGC100**

front

<b>GAGE AND INSTRUMENT RECORD CARD</b>	
SERIAL / I. D. NO.	LOCATION
TYPE	SIZE / RANGE
MODEL	RATED ACCURACY
CALIBRATION / INSPECTION FREQUENCY	
MEASUREMENT STANDARD	PROCEDURE NO.
PURCHASE DATE:	
VENDOR / SUPPLIER:	
ADDRESS:	
PHONE: ( )	
DATE RETIRED / REPLACED:	
REMARKS:	

back

<b>GAGE/INSTRUMENT RECORD CARD</b>			
CALIBRATION DATE	CHECKED BY	ID NO.	FREQUENCY
CONDITION FOUR		ADJUSTMENTS	COMMENTS
			RECAL DATE

QEE - THE QUALITY CORP. - NEWSPRING, TN - DTIC 988-2145 - PART# QGC-100

## T208M Printers



T200 series printers are portable desktop printers offering an economical option for low-volume customers who want to take advantage of thermal transfer printing technology. Their small, lightweight design and crisp high-quality print makes them ideal for printing on Q-CEE's label products

## PrintEasy Software

PrintEasy software is powerful yet easy to use Windows based label design and printing software. With PrintEasy software, you can quickly and easily combine barcodes, text and graphics into professional quality labels. PrintEasy software offers excellent tools to give you total control over the label appearance before printing.

## 1330-0600-T200

1330-0600-T200 (RS) is a high quality black wax thermal transfer ribbon tested and approved to use on Q-CEE's thermal transfer printable paper labels with T208M printer.

### General Specifications

Print head width	104mm (4.09in)
Print head resolution	T208M: 8 dpmm (203 dpi)
Print speed (max)	51 mm/sec (2 in/sec)
Communication	Parallel (centronics) and serial (RS232)
Printer dimensions	200mm W x 247mm D x 171 mm H (7.9" W x 9.75" D x 6.75" H)
Printer weight	1.81 kg (4 lbs)
Compatible Products	QLL401 - QLL421 (pg 25) QAL601 - QAL612 (pg 26)

### Ordering Information

Product order code	T208M-Printer
Description	Tyco Electronics T208M thermal transfer printer – standard 200 dpi

**NOTE:** T208M printer can only be used with Q-CEE's thermal transfer printable labels available in roll format. It is not suitable for laser label products.

### General Specifications

Operating Systems	Windows 95, 98, ME, NT, 2000, XP
Databases	Several database connectivity options including ODBC support: Access, Excel, Paradox and many more.
Barcodes	Numerous 1D & 2D barcodes Sequential numbering
Graphics	Multiple graphics format import for logos and common image types
Fonts	Built in Printer fonts & Windows True Type Font support
Units	Metric & US measurement system

### Ordering Information

Product order code	PrintEasy-PRO
Description	Tyco Electronics PrintEasy Label printing software

### General Specifications

Ribbon Width	110mm (4.33 in)
Ribbon Length	91m (300 ft)
Ink	Wax
Color	Black
Ribbon Wind direction	Ink side out
Compatible products	Q-CEE's Paper labels – QLL401 - QLL421 (page 25) QAL601 - QAL612 (page 26)

### Ordering Information


Product order code	1330-0600-T200
Description	0600 (RS) Thermal Transfer ribbon for Tyco Electronics T208M printers





Please copy this form, then **PRINT** or **TYPE** all required information below.

<b>1 Bill to</b> (mail invoice to)			<b>2 Ship to</b> (send goods to)		
Company Name			Company Name		
Street Address or POB			Street Address ONLY		
City	ST	ZIP	City	ST	ZIP
Your name			Send Attention to:		
Telephone	( )	X	Telephone	( )	X
Fax	( )	X	Fax	( )	X

**3 Method of Payment** (check one)

American Express  Card Number:

Master Card   Expiration Date:     Name of cardholder: \_\_\_\_\_ (please print)

**Terms: Net 30 Days**

- To open a new account, include, with this order, your credit references (1 bank and 3 trade), plus your Duns number, if available.
- For first shipment only, allow an extra three days for us to open your account.

**Purchase Order Number:** \_\_\_\_\_

**\$100.00 min. order**

**4 Method of Shipment** (check one)

**Fed Ex Ground (US and Canada only)** Shipping charges are based on weight and method of shipment and are added to your invoice. Normal shipment is Fed Ex Ground.

**Fed Ex Third Day (US only)**

**Fed Ex Second Day**

**Fed Ex Next Day**

**Other** (specify) \_\_\_\_\_

Bill the freight charges to my account:  
 Collect Account Number: \_\_\_\_\_

**5 Items to Order**

Ln.	Stock Number	Color	Description	Quantity	Unit Price	Extension
1.						
2.						
3.						
4.						
5.						
6.						
7.						
8.						
9.						
10.						

**6 Fax, toll free, 800-285-7016**

<b>U.S. Dollars</b>	<b>Merchandise TOTAL</b>	
---------------------	--------------------------	--

# Part Number Index & Label Specifications

Part No.	Page No.	Size (Length x Width)		Material (see chart at right)
		Inches	mm	
L05	12	1/2 x 1/2"	25.4 x 12.7	Laser A
L05AC	13	1/2 x 1/2"	25.4 x 12.7	Laser A
L05X	13	1/2 x 1/2"	25.4 x 12.7	Laser A
L20	12	2" x 5/8"	50.8 x 15.9	Laser A
L20AC	13	2" x 5/8"	50.8 x 15.9	Laser A
L20X	13	2" x 5/8"	50.8 x 15.9	Laser A
M1020	10	0.98" Dia.	25.0	Tamper A
M5031	14	3/4" Dia.	19.1 Dia.	Tamper A
M5031A	14	2 x 1/2"	50.8 x 12.7	Tamper A
M5031AS	14	2 x 1/2"	50.8 x 12.7	Tamper A
M5031C	14	3/4" Dia.	19.1 Dia.	Tamper A
M5031R	14	3/4" Dia.	19.1 Dia.	Tamper A
M5031W	14	3/4" Dia.	19.1 Dia.	Tamper A
M5032C	14	3/4" Dia.	19.1 Dia.	Tamper A
M5051C	15	see p. 15		Tamper C
MAM101	20	1" x 1/2"	25.4 x 12.7	Vinyl A
MAM115	20, 23	1" x 1/2"	25.4 x 12.7	Vinyl A
MAM126	16	1" x 1/2"	25.4 x 12.7	Vinyl A
MAM127	18	1" x 1/2"	25.4 x 12.7	Vinyl A
MAM128	17, 23	1" x 1/2"	25.4 x 12.7	Vinyl A
MAM130	20	1" x 1/2"	25.4 x 12.7	Vinyl A
MAM133	16	1" x 1/2"	25.4 x 12.7	Vinyl A
MAM136	17, 22	1" x 1/2"	25.4 x 12.7	Vinyl A
MAM142	18	1" x 1/2"	25.4 x 12.7	Vinyl A
MQC205	7	2" x 5/8"	50.8 x 15.9	Vinyl A
MQC555	7	1" x 1/2"	25.4 x 12.7	Vinyl A
PM210	23	2" x 5/8"	50.8 x 15.9	
QAA375	30	see page 31		Vinyl A
QAA501	30	see page 31		Vinyl A
QAD502	29	1/4" Dia.	6.4 Dia.	Vinyl A
QAL601-QAL612	26	4 x 3"	101.6 x 76.2	Paper A
QC100X	19	2 x 1/2"	50.8 x 12.7	Vinyl A
QC101	20	2 x 1/2"	50.8 x 12.7	Vinyl A
QC105	16	2 x 1/2"	50.8 x 12.7	Vinyl A
QC115	20, 23	2 x 1/2"	50.8 x 12.7	Vinyl A
QC118	17, 21-24	2 x 1/2"	50.8 x 12.7	Vinyl A
QC120	24	2 x 1/2"	50.8 x 12.7	Vinyl A
QC122	18, 23	2 x 1/2"	50.8 x 12.7	Vinyl A
QC126	16	2 x 1/2"	50.8 x 12.7	Vinyl A
QC126S	16	2 x 1/2"	50.8 x 12.7	Vinyl A
QC127	18	2 x 1/2"	50.8 x 12.7	Vinyl A
QC127S	18	2 x 1/2"	50.8 x 12.7	Vinyl A
QC128	17, 23	2 x 1/2"	50.8 x 12.7	Vinyl A
QC129	24	2 x 1/2"	50.8 x 12.7	Vinyl A
QC130	20	2 x 1/2"	50.8 x 12.7	Vinyl A
QC131	17, 22-24	2 x 1/2"	50.8 x 12.7	Vinyl A
QC132	17, 21	2 x 1/2"	50.8 x 12.7	Vinyl A
QC133	16	2 x 1/2"	50.8 x 12.7	Vinyl A
QC134	20	2 x 1/2"	50.8 x 12.7	Vinyl A
QC135	17	2 x 1/2"	50.8 x 12.7	Vinyl A
QC136	17, 21, 22	2 x 1/2"	50.8 x 12.7	Vinyl A
QC136S	17, 22	2 x 1/2"	50.8 x 12.7	Vinyl A
QC137	18	2 x 1/2"	50.8 x 12.7	Vinyl A
QC138	18	2 x 1/2"	50.8 x 12.7	Vinyl A
QC142	18	2 x 1/2"	50.8 x 12.7	Vinyl A

Part No.	Page No.	Size (Length x Width)		Material (see chart at right)
		Inches	mm	
QC143	18, 20	2 x 1/2"	50.8 x 12.7	Vinyl A
QC144	24	2 x 1/2"	50.8 x 12.7	Vinyl A
QC145	18, 23	2 x 1/2"	50.8 x 12.7	Vinyl A
QC146	16	2 x 1/2"	50.8 x 12.7	Vinyl A
QC148	20, 22, 23	2 x 1/2"	50.8 x 12.7	Vinyl A
QC149	22, 23	2 x 1/2"	50.8 x 12.7	Vinyl A
QC153	16	2 x 1/2"	50.8 x 12.7	Vinyl A
QC155	16	2 x 1/2"	50.8 x 12.7	Vinyl A
QC156	21, 24	2 x 1/2"	50.8 x 12.7	Vinyl A
QC157	17, 22	2 x 1/2"	50.8 x 12.7	Vinyl A
QC158	22, 24	2 x 1/2"	50.8 x 12.7	Vinyl A
QC162	17	2 x 1/2"	50.8 x 12.7	Vinyl A
QC164	20	2 x 1/2"	50.8 x 12.7	Vinyl A
QC169	20	2 x 1/2"	50.8 x 12.7	Vinyl A
QC170	16	2 x 1/2"	50.8 x 12.7	Vinyl A
QC171	21, 24	2 x 1/2"	50.8 x 12.7	Vinyl A
QC172	16	2 x 1/2"	50.8 x 12.7	Vinyl A
QC200AC	19	2" x 5/8"	50.8 x 15.9	Cover A
QC210AC	19	2-1/4" x 7/8"	57.2 x 22.2	Vinyl B
QC450AM	7	2" x 5/8"	50.8 x 15.9	Aluminum A

## Key to Material

Material Code	Material Specifications	Adhesive (see right)
Aluminum A	0.04mm aluminum	Aggressive
Aluminum B	0.003" (0.08mm) soft aluminum	Permanent
Cloth A	0.006" (0.15mm) plastic cloth	Aggressive
Cover A	0.0002" (0.5mm) clear polyethylene	Permanent
Cover B	clear acetate	Permanent
Laser A	0.0034" (0.086mm) vinyl	Permanent
Paper A	Smudge-proof litho paper	Permanent
Paper B	Matte litho paper	Permanent
Paper C	13 pt. tag stock; reinforced fiber patch	N/A
Tamper A	0.0024" (0.06mm) tamper evident	Permanent
Tamper B	0.002" (0.05mm) destructible polyethylene	Permanent
Tamper C	0.001" (0.025mm) polyester—tamper indicating adhesive	Permanent
Vinyl A	0.004" (0.1mm) Vinyl	Removable
Vinyl B	0.004" (0.1mm) Vinyl	Permanent

## Notes on Adhesives

**Removable adhesive:** Do you have an application where the label receives minimal handling or rubbing and minimal contact with oil, solvents, or chemicals? If so, a label with removable adhesive will stick indefinitely. These labels leave little or no adhesive residue when removed, so for labels that must be periodically removed and replaced, removable adhesive reduces clean-up labor.

**Permanent adhesive:** Labels with permanent adhesive grip surfaces more aggressively. These labels work well when subjected to oil, solvents, or chemicals. While we call the adhesive “permanent,” you can remove these labels. However, after removal, some adhesive may remain on the instrument surface.

**Aggressive adhesive:** In extreme circumstances, our labels with permanent adhesive may lose their grip. For these situations, we offer two more options. First, Q-CEE’s Plastic Cloth and Aluminum labels feature our most aggressive adhesives. These labels may hold fast where others will not. The second option would be to use our clear protective cover, QC210AC, shown on page 19.

See chart on page 5 for label part numbers.

Part No.	Page No.	Size (Length x Width)		Material (see chart above)
		Inches	mm	
QCC226	11, 16, 17	1/2" Dia.	12.7	Vinyl B
QCC227	11, 18	1/2" Dia.	12.7	Vinyl B
QCC236	11, 17, 21, 22	1/2" Dia.	12.7	Vinyl B
QCC306	5, 6	1-3/4 x 5/8"	44.5 x 15.9	Vinyl B
QCC306X	19	1-3/4 x 5/8"	44.5 x 15.9	Vinyl B
QCC311	5, 6	1 x 5/8"	50.8 x 12.7	Vinyl B
QCC330	5, 6	3 x 1"	76.2 x 25.4	Vinyl B
QCC351	5, 11	1/2" Dia.	12.7	Vinyl B
QCC359	5, 11	5/8" Dia.	15.9 Dia.	Vinyl B
QCC500	5, 11	1/2" Dia.	12.7	Vinyl A
QCC558	5, 11	5/8" Dia.	15.9 Dia.	Vinyl A
QCC564	5, 20	5/8" Dia.	15.9mm	Vinyl A
QCC607	10	1/2" Dia.	12.7	Vinyl A
QCC608	10	1/2" Dia.	12.7	Vinyl A
QCC609	10	1/2" Dia.	12.7	Vinyl A
QCC610	10	1/2" Dia.	12.7	Vinyl A
QCC611	5, 10	1/2" Dia.	12.7	Vinyl A
QCC612	10	1/2" Dia.	12.7	Vinyl A
QCCLIM	6, 17	1-3/4 x 5/8"	44.5 x 15.9	Vinyl B
QCE10	30	0.5 x 0.4"	13.0 x 9.0	Vinyl B
QCE30	30	1 x 0.8"	25.4 x 20	Vinyl B
QCP600	13			
QCP650	13			
QGC100	31			
QIDX	19	1-3/4 x 3/4"	44.5 x 19.05	Aluminum B

Part No.	Page No.	Size (Length x Width)		Material (see chart above)
		Inches	mm	
QINS1-5	31	3/4" Dia.	19.1 Dia.	
QINS11-15	31	3/4" Dia.	19.1 Dia.	
QINS16-20	31	3/4" Dia.	19.1 Dia.	
QINS6-10	31	3/4" Dia.	19.1 Dia.	
QLL-COVER	25	2 x 3/4"	50.8 x 19.1	Cover B
QLL401-				
QLL420	25, 32	2 x 3/4"	50.8 x 19.1	Paper B
QLLD500	29	1/2" Dia.	12.7	Paper B
QLLD750	29	3/4" Dia.	19.1	Paper B
QPC01	5, 7	1-1/2 x 5/8"	38.1 x 15.9	Cloth A
QPC02	5, 7	1-1/2 x 5/8"	38.1 x 15.9	Cloth A
Q TIDY	13			
QUP3	5, 8, 9	see p. 9		Vinyl B
QUP6	5, 8, 9	see p. 9		Vinyl B
QUP12	5, 9	see p. 9		Vinyl B
QUP12-136	5, 9	see p. 9		Vinyl B

Our sales associates can provide full service for your quality assurance product needs. They are prepared to help you select the appropriate product to meet your requirements, provide samples and literature, quote price and delivery, enter orders, provide technical information, and support you after the sale.

### Call or Fax for Assistance

#### Hours:

8 a.m. to 5 p.m. (EST)

Monday through Friday

#### Toll Free (US, PR, and Canada)

Telephone: 800-950-4922

Fax: 800-285-7016

### Ordering Information

You may place orders by telephone, fax, or mail. Orders will normally ship within 24 hours.

You may charge your order on Master Card, Visa, or American Express. We also ship via Fed Ex.

### New Customers

We ask new customers to fax or mail their first order to us. This copy will help us set up your account correctly. If you wish to purchase on open account, your first shipment may be delayed up to two days for credit approval. Credit card payment will expedite your first order.

### Terms

Net 30 days with approved credit.

### Shipping Terms

We add freight and handling charges to each order and bill them according to the weight and the shipping method chosen. The minimum charge is \$5.

### Sales Tax

Rhode Island state sales tax will be added when applicable.

### Remit-To Address

Tyco Electronics  
P.O. Box 360261  
Pittsburgh, PA 15251-6261



COVERALL, PRINTEASY, Q-CEE'S, the TE Logo, Tyco Electronics and WRAP-UP are trademarks.

SHARPIE is a trademark of SANFORD or its Affiliates.

Printed in the U.S.A.  
2.5M-M&S-FP-2-09



**76 Commercial Way  
East Providence, RI 02914**

#### Customer Service

Telephone: 800-950-4922 Fax: 800-285-7016  
8 a.m. – 5 p.m., Monday – Friday, East Coast Time

PRSRT STD  
Postage  
PAID